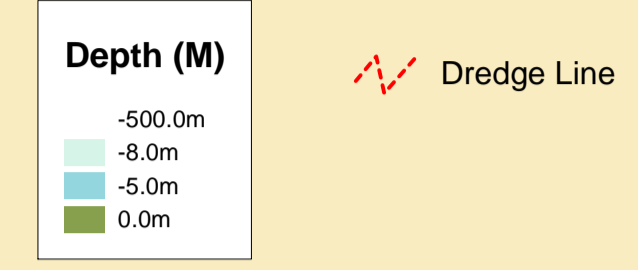




**MERSEY DOCKS AND HARBOUR COMPANY LTD**  
 GARY DOYLE  
 Group Harbour Master  
**Liverpool Channel**  
**LPC004\_4\_2024\_006**  
**Crosby Bend & Askew Spit**

**DEPTHS**  
 Depths are in metres and are reduced to chart datum being 4.93m below Ordnance Datum (Newlyn), which is approximately the level of Lowest Astronomical Tide.

**HEIGHTS**  
 Heights are in metres. Underlined figures show heights above Chart Datum.



**POSITIONS**  
 Positions are referred to OSGB36 National Grid Datum.  
**UKHO & NTMS**  
 When using this chart please refer to UKHO Admiralty Publications and also local Notice to Mariners and Navigational Warnings.

**TOPOGRAPHY**  
 The shore features on this chart are based largely on Ordnance Survey digital mapping data with permission of HMSO. © Crown Copyright 2024. Peel Licence Number 100018033.

**FLATS & SANDBANKS**  
**CAUTION OWING TO FREQUENT CHANGES IN DEPTHS AND POSITIONS OF FLATS AND SANDBANKS THIS CHART SHOULD BE USED WITH CAUTION.**

Surveyed by:	REL
Processed by:	REL
Checked by:	NM
Surveyed:	17th December 2024
Issued:	19th December 2024

