

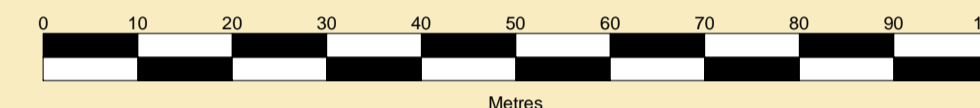
PORT OF SHEERNESS LIMITED

Gary Doyle
Group Harbour Master

The Swale

**MWB020-1_2024_001
RIDHAM DOCK**

SCALE 1:800 at A1



DEPTHS

Depths are in metres and are reduced to chart datum being 2.90m below Ordnance Datum (Newlyn), which is approximately the level of Lowest Astronomical Tide.

HEIGHTS

Heights are in metres. Underlined figures show heights in meters above Chart Datum.

DEPTH COLOUR TABLE

Green	(-1.5m,0m)
Blue	(0m,1m)
Light Blue	(1m,2m)
White	(2m,4m)
White	(>=4m)

POSITIONS

Positions are referred to OSGB36 National Grid Datum.

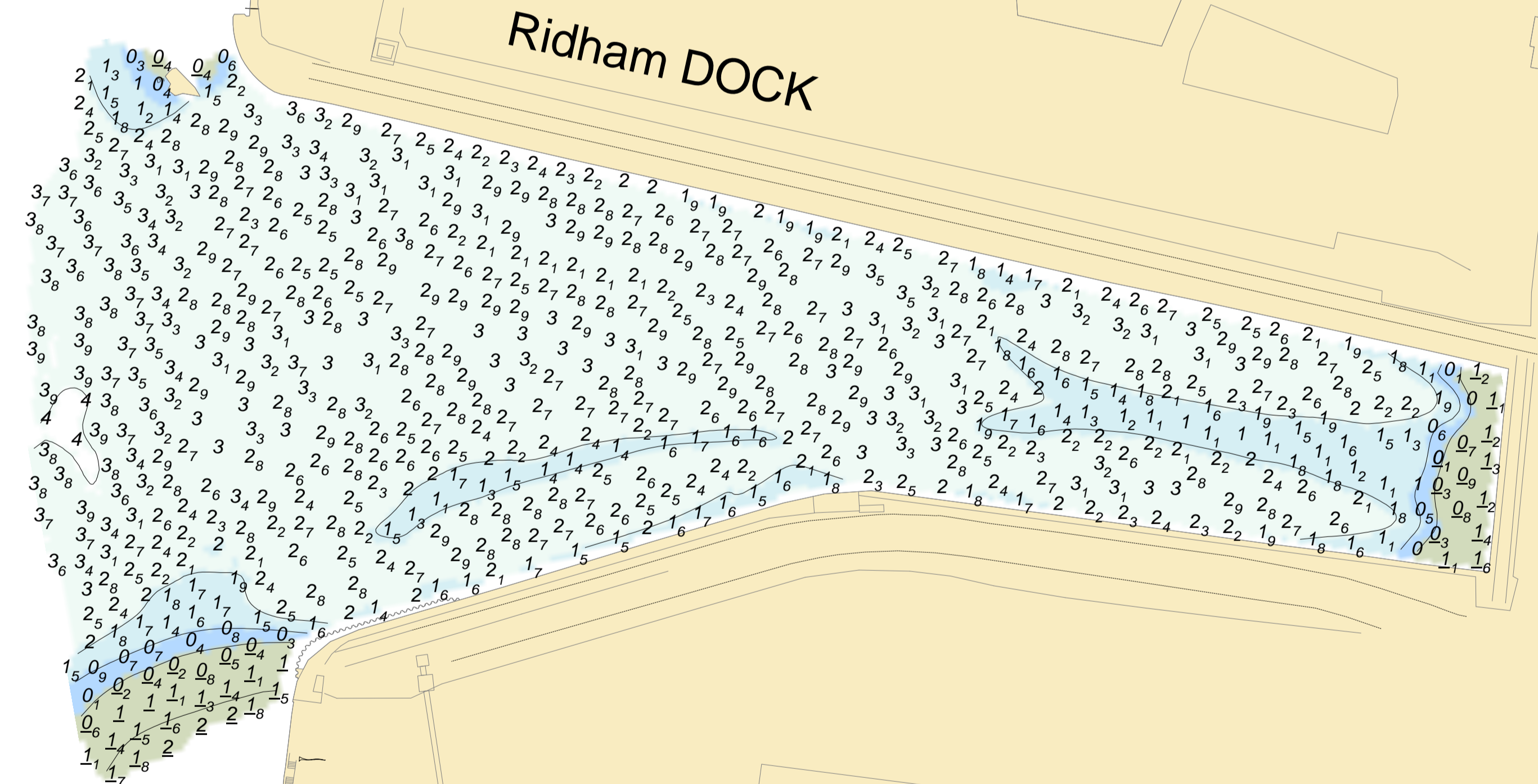
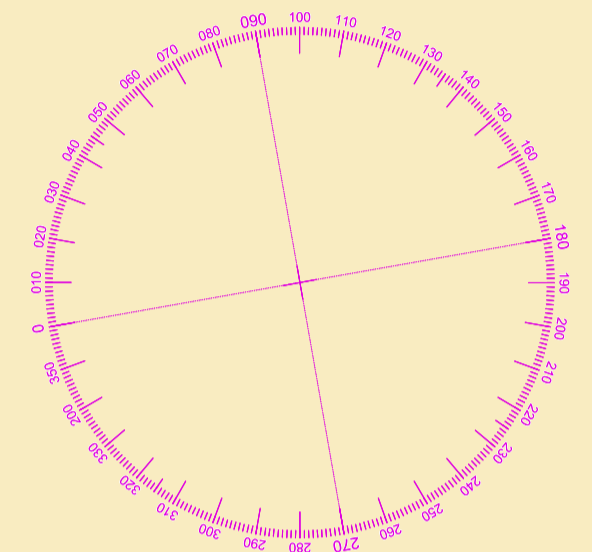
Surveyed by:	Shoreline Surveys
Processed by:	NM
Checked by:	NM
Surveyed:	27th March 2024
Issued:	31st January 2025

NOTES

While every care has been taken in the preparation of the information relating to the soundings shown on this chart, PEEL PORTS MEDWAY make no warranty as to the accuracy and will not accept any responsibility whatsoever arising from errors and omissions or for any consequence arising therefrom.

TOPOGRAPHY

The shore features on this chart are based largely on Ordnance Survey digital mapping data with permission of HMSO. © Crown Copyright 2025. Peel Licence Number 100018033.



Obstn 3.4