

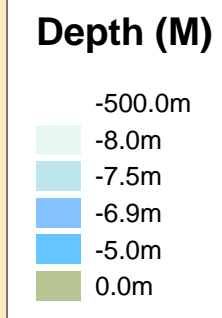


MERSEY DOCKS AND HARBOUR COMPANY LTD
Gary Doyle
Group Harbour Master

Liverpool Channel
LPC004_6_2025_003
Crosby Shoal

DEPTHS
Depths are in metres and are reduced to chart datum being 4.93m below Ordnance Datum (Newlyn), which is approximately the level of Lowest Astronomical Tide.

HEIGHTS
Heights are in metres. Underlined figures show heights above Chart Datum.



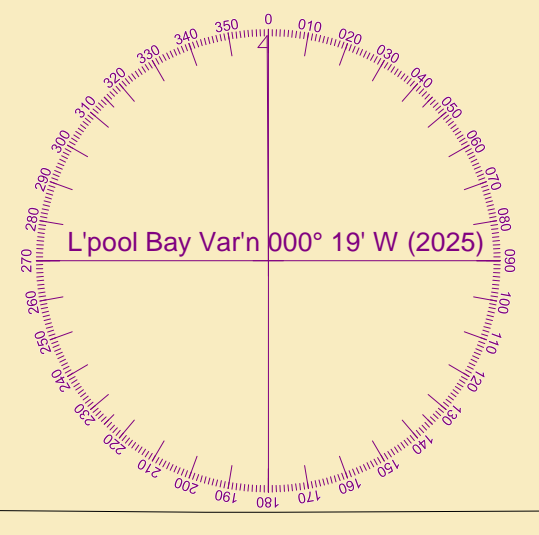
Dredge Line

POSITIONS
Positions are referred to OSGB36 National Grid Datum.

UKHO & NTMS
When using this chart please refer to UKHO Admiralty Publications and also local Notice to Mariners and Navigational Warnings.

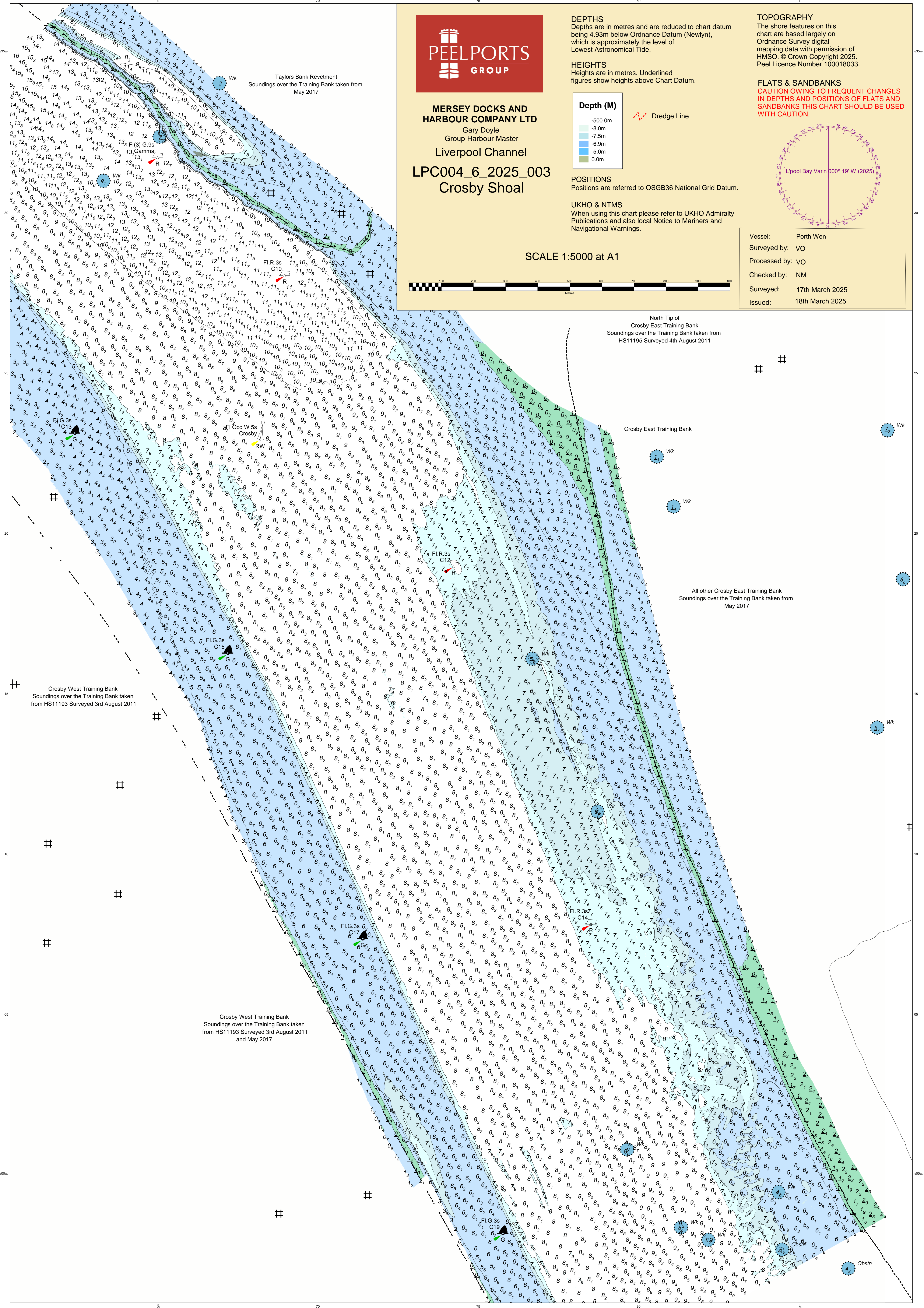
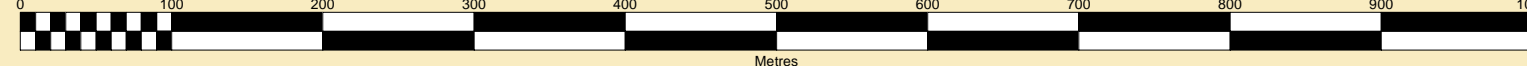
TOPOGRAPHY
The shore features on this chart are based largely on Ordnance Survey digital mapping data with permission of HMSO. © Crown Copyright 2025. Peel Licence Number 100018033.

FLATS & SANDBANKS
CAUTION OWING TO FREQUENT CHANGES IN DEPTHS AND POSITIONS OF FLATS AND SANDBANKS THIS CHART SHOULD BE USED WITH CAUTION.



Vessel: Porth Wen
Surveyed by: VO
Processed by: VO
Checked by: NM
Surveyed: 17th March 2025
Issued: 18th March 2025

SCALE 1:5000 at A1



Taylor's Bank Revetment
Soundings over the Training Bank taken from May 2017

North Tip of Crosby East Training Bank
Soundings over the Training Bank taken from HS11195 Surveyed 4th August 2011

Crosby East Training Bank

All other Crosby East Training Bank
Soundings over the Training Bank taken from May 2017

Crosby West Training Bank
Soundings over the Training Bank taken from HS11193 Surveyed 3rd August 2011

Crosby West Training Bank
Soundings over the Training Bank taken from HS11193 Surveyed 3rd August 2011 and May 2017