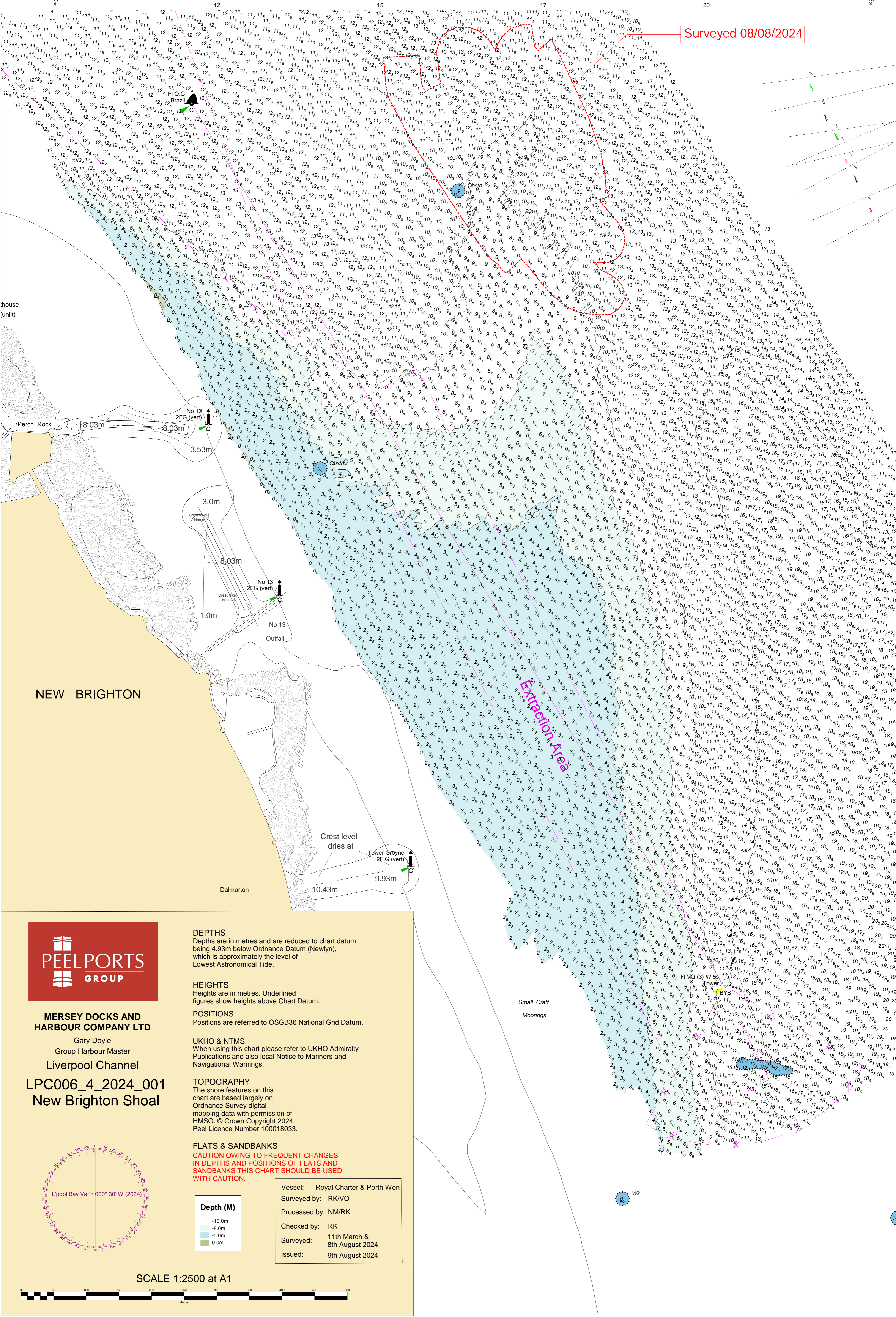


Surveyed 08/08/2024



# NEW BRIGHTON



**MERSEY DOCKS AND HARBOUR COMPANY LTD**

Gary Doyle  
Group Harbour Master

Liverpool Channel

LPC006\_4\_2024\_001  
New Brighton Shoal

**DEPTHS**  
Depths are in metres and are reduced to chart datum being 4.93m below Ordnance Datum (Newlyn), which is approximately the level of Lowest Astronomical Tide.

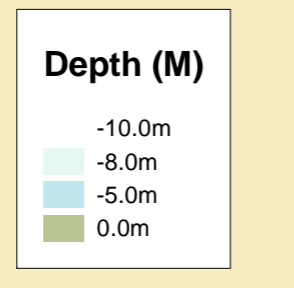
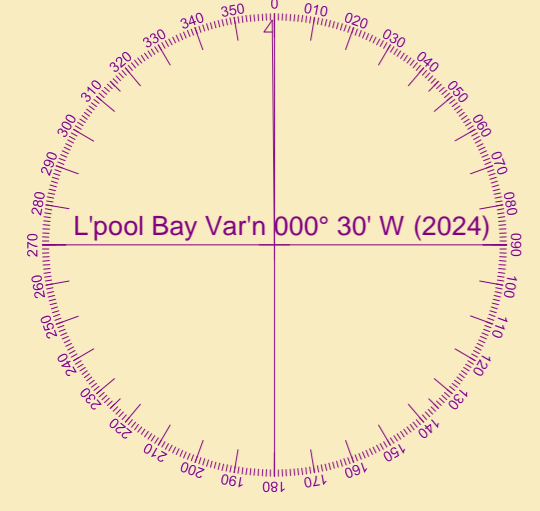
**HEIGHTS**  
Heights are in metres. Underlined figures show heights above Chart Datum.

**POSITIONS**  
Positions are referred to OSGB36 National Grid Datum.

**UKHO & NTMS**  
When using this chart please refer to UKHO Admiralty Publications and also local Notice to Mariners and Navigational Warnings.

**TOPOGRAPHY**  
The shore features on this chart are based largely on Ordnance Survey digital mapping data with permission of HMSO. © Crown Copyright 2024. Peel Licence Number 100018033.

**FLATS & SANDBANKS**  
**CAUTION OWING TO FREQUENT CHANGES IN DEPTHS AND POSITIONS OF FLATS AND SANDBANKS THIS CHART SHOULD BE USED WITH CAUTION.**



Vessel: Royal Charter & Porth Wen  
Surveyed by: RK/VO  
Processed by: NM/RK  
Checked by: RK  
Surveyed: 11th March & 8th August 2024  
Issued: 9th August 2024

SCALE 1:2500 at A1

