

NtoM 066 - 2024

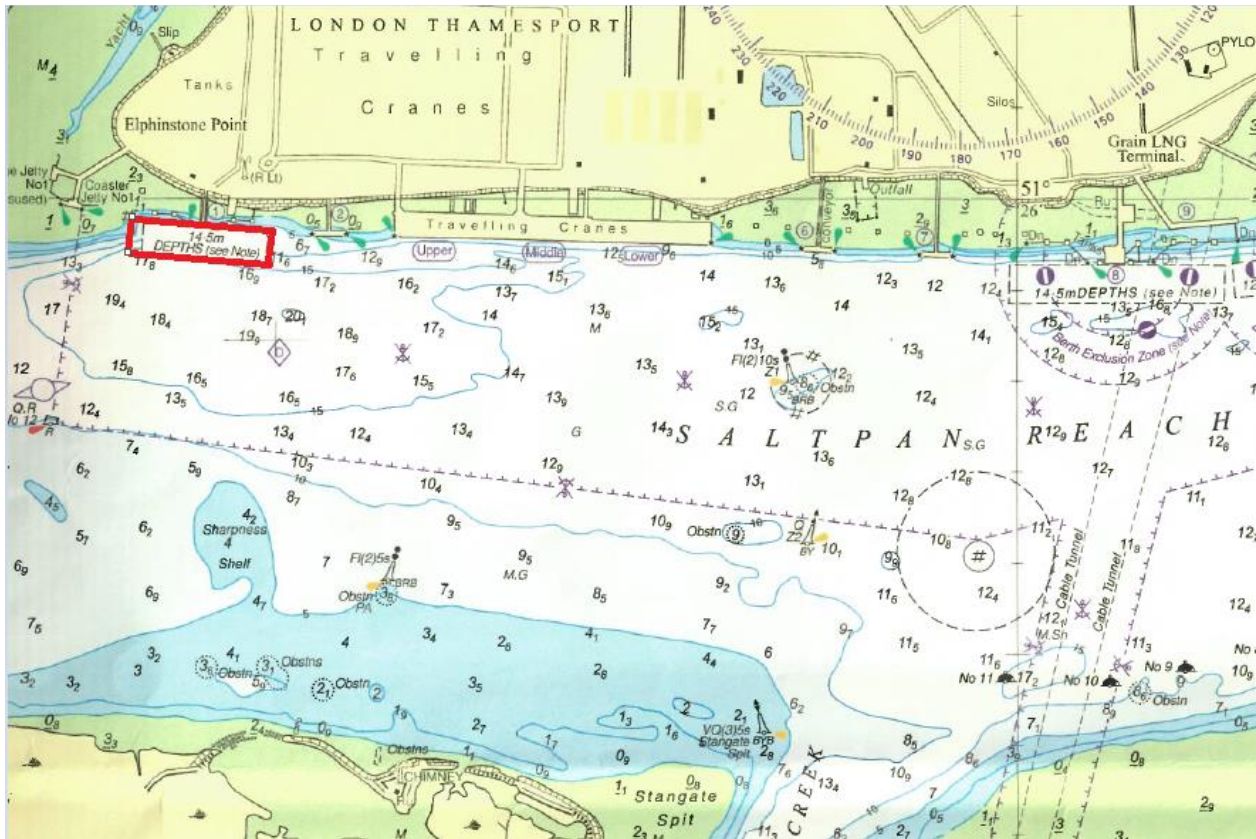
River Medway – Saltpan Reach

BP Isle of Grain No.1 Jetty – Dredging Operations

NOTICE IS HEREBY GIVEN that dredging operations are due to take place at BP Isle of Grain No.1 jetty, dredging will commence on or around 03/01/2025 and is expected to be complete on or around 15/01/2025. Operations will be focussed around the “berthing box” and will be carried out by the water injection dredger ‘Aquadelta’ who will maintain a listening watch on VHF Channel 74 at all times. “Aquadelta” will be restricted in her ability to manoeuvre and display the required signals for respective operations by day and night.



Issued on behalf of Port of Sheerness Ltd, the Statutory Harbour Authority for the River Medway and The Swale
Telephone calls, VHF radio traffic, CCTV and radar traffic images may be recorded at
the Peel Ports Group Port Control Centre, Liverpool.



All vessels are required to pass BP Isle of Grain Jetty 1 with caution, reduce their speed and wash accordingly and maintain a listening watch on VHF Ch.74 at all times.

Further information may be obtained from Medway VTS on VHF Channel 74, call sign “Medway VTS” or telephone 0151 949 6148 or 0151 949 6650. **(Recorded Lines)**

**Marine Operations Department
Peel Ports London Medway**

Notice Issued: 12th December 2024
Notice Expiry: 19th January 2025