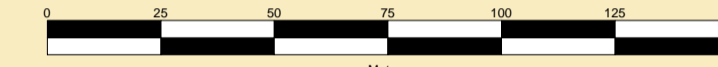




CLYDEPORT OPERATIONS LIMITED
 GARY DOYLE
 Group Harbour Master

Firth of Clyde
HM 1094-1-47
ARDROSSAN HARBOUR
AND APPROACHES

SCALE 1:1000 at A0



DEPTHS
 Depths are in metres and are reduced to chart datum being 1.60m below Ordnance Datum (Newlyn), which is approximately the level of Lowest Astronomical Tide.

HEIGHTS
 Heights are in metres. Underlined figures show heights above Chart Datum.

DEPTH COLOUR TABLE

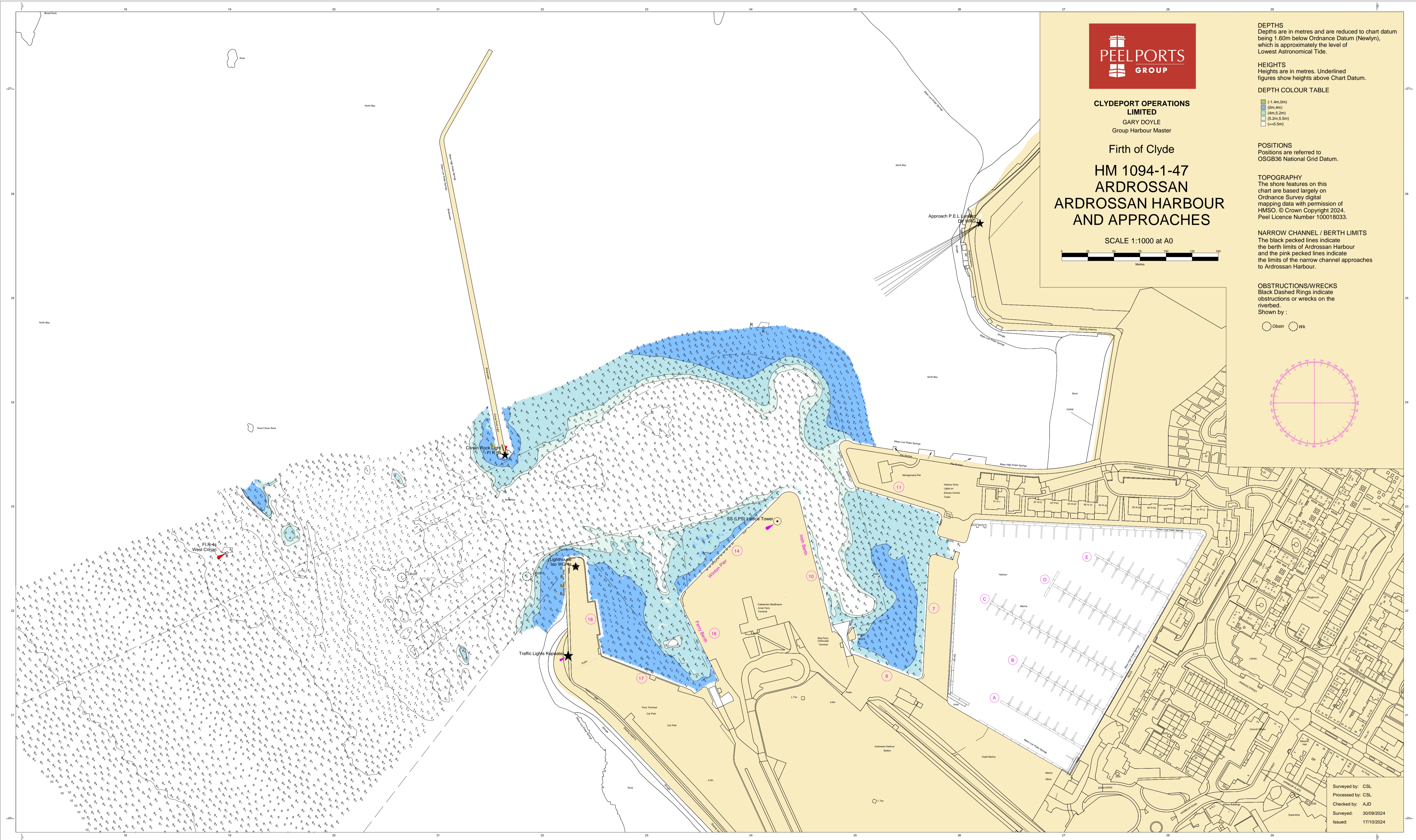
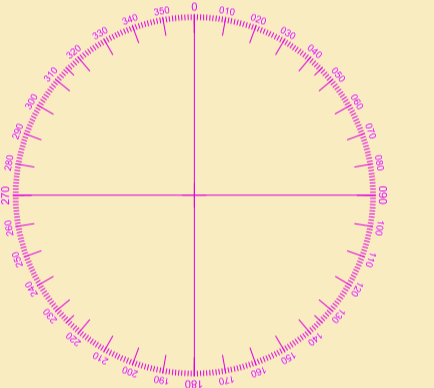
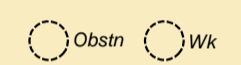
Light Green	(-1.4m, 0m)
Light Blue	(0m, 4m)
Medium Blue	(4m, 5.2m)
Dark Blue	(5.2m, 5.5m)
White	(=5.5m)

POSITIONS
 Positions are referred to OSGB36 National Grid Datum.

TOPOGRAPHY
 The shore features on this chart are based largely on Ordnance Survey digital mapping data with permission of HMSO. © Crown Copyright 2024. Peel Licence Number 100018033.

NARROW CHANNEL / BERTH LIMITS
 The black pecked lines indicate the berth limits of Ardrossan Harbour and the pink pecked lines indicate the limits of the narrow channel approaches to Ardrossan Harbour.

OBSTRUCTIONS/WRECKS
 Black Dashed Rings indicate obstructions or wrecks on the riverbed.
 Shown by :



Surveyed by: CSL
 Processed by: CSL
 Checked by: AJD
 Surveyed: 30/09/2024
 Issued: 17/10/2024