



MERSEY DOCKS AND HARBOUR COMPANY LTD

Gary Doyle
Group Harbour Master

River Mersey

LPR001_4_2024_008

Approaches to Alfred River Entrance and Twelve Quays Ro-Ro Terminal

DEPTHS
Depths are in metres and are reduced to chart datum being 4.93m below Ordnance Datum (Newlyn), which is approximately the level of Lowest Astronomical Tide.

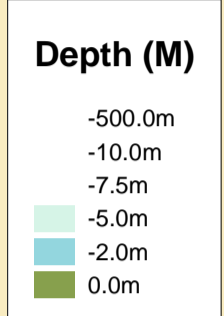
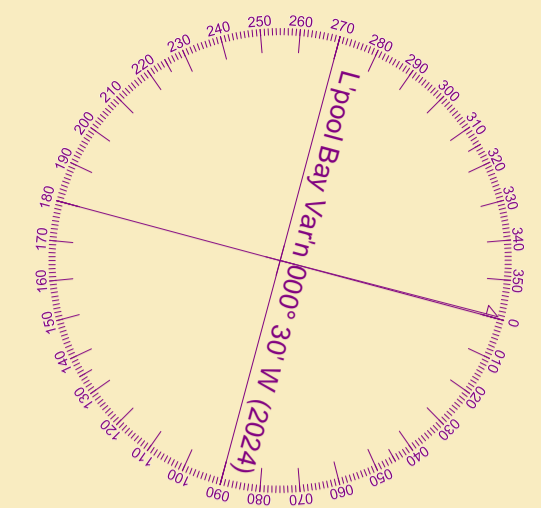
HEIGHTS
Heights are in metres. Underlined figures show heights above Chart Datum.

POSITIONS
Positions are referred to OSGB36 National Grid Datum.

UKHO & NTMS
When using this chart please refer to UKHO Admiralty Publications and also local Notice to Mariners and Navigational Warnings.

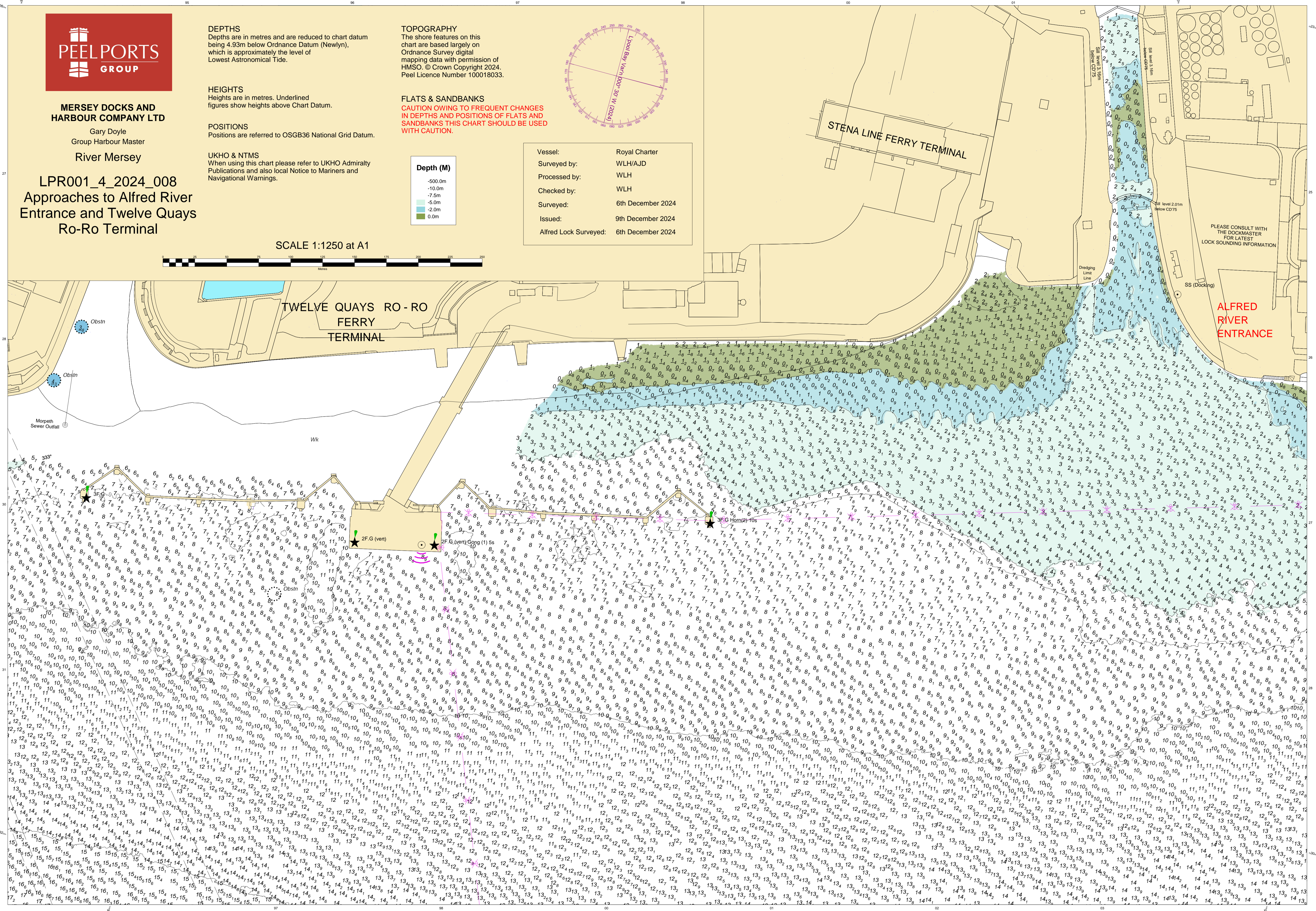
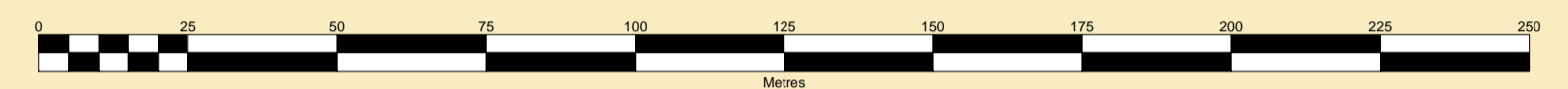
TOPOGRAPHY
The shore features on this chart are based largely on Ordnance Survey digital mapping data with permission of HMSO. © Crown Copyright 2024. Peel Licence Number 100018033.

FLATS & SANDBANKS
CAUTION OWING TO FREQUENT CHANGES IN DEPTHS AND POSITIONS OF FLATS AND SANDBANKS THIS CHART SHOULD BE USED WITH CAUTION.



Vessel:	Royal Charter
Surveyed by:	WLH/AJD
Processed by:	WLH
Checked by:	WLH
Surveyed:	6th December 2024
Issued:	9th December 2024
Alfred Lock Surveyed:	6th December 2024

SCALE 1:1250 at A1



PLEASE CONSULT WITH THE DOCKMASTER FOR LATEST LOCK SOUNDING INFORMATION