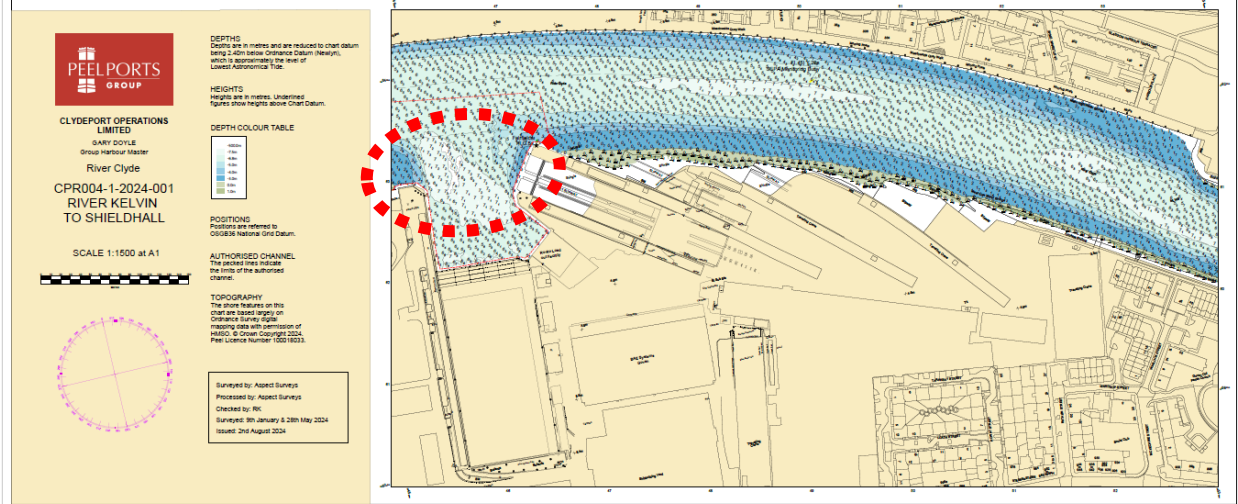
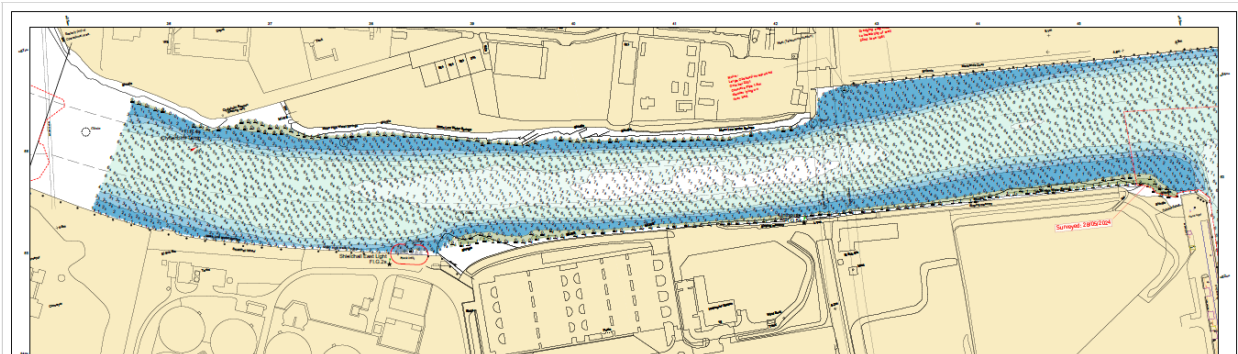
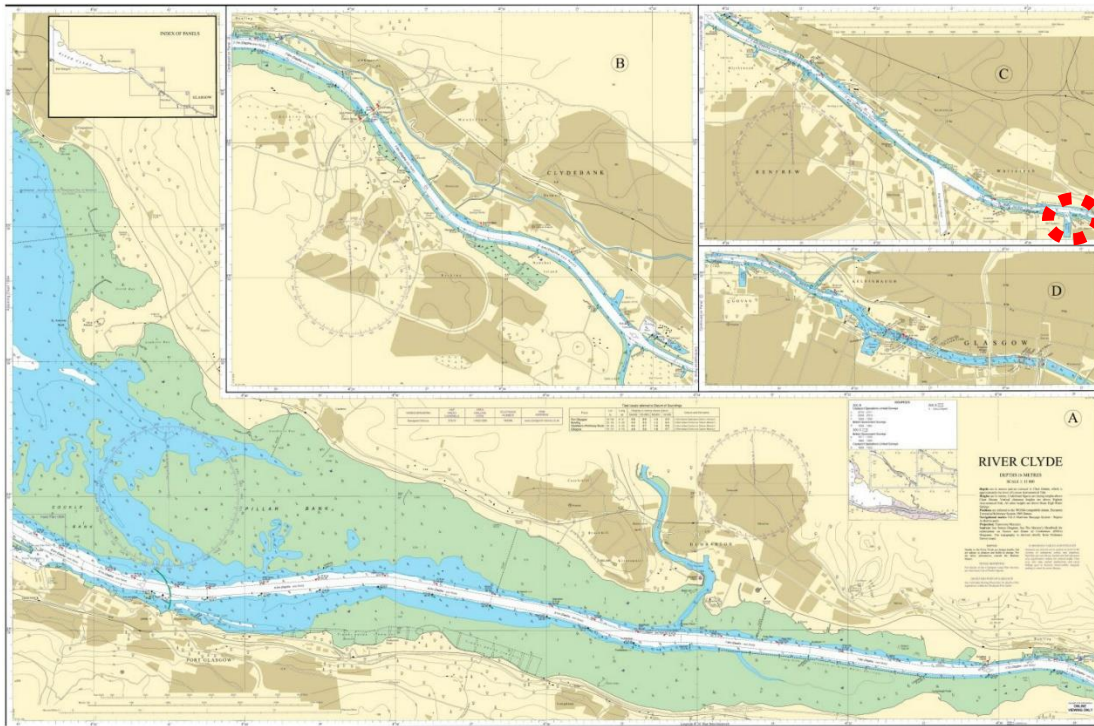


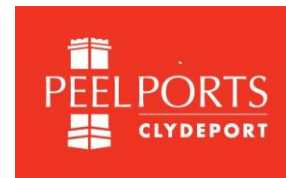
BERTH DATA SHEET

BAE GOVAN - GLASGOW



BERTH DATA SHEET

BAE GOVAN - GLASGOW



PARTICULARS/BASIC INFORMATION

Admiralty Chart No.	2007 Plan C	Survey Drawing No	CPR004-1
Min. Depth Alongside	Refer Survey Drawing	Fendering	Yokohama
Quay Design	Shipyard	Avg Water Density	1005 kg/m ³
Latitude	55°51.90'N	Longitude	004°19.50'W
Quay length overall	South Quay Wall 80m	Eastings/Northings	
	West Quay Wall 82m		
No of berths	various	SWL Bollards	50T
Max vessel LOA		Avg bollard spacing	
Max vessel beam		Line of the berth	
Air Draught restrictions	Erskine Bridge**	Quayside SWL	
ISPS Status	1	Height of cope edge*	7.3m

*from Chart Datum

** up to 49.8m from MHWS unrestricted, up to 53.3m from MHWS 3 months' notice

QUAYSIDE FACILITIES – BY PRIOR ARRANGEMENT

Fresh Water	By arrangement	Shore Power	By arrangement
Port Waste	By arrangement	Cranes	Yes

TIDAL INFORMATION – BASED ON Glasgow

HAT	5.3m	MHWS	4.8m
MHWN	3.9m	MLWN	1.8m
MLWS	0.7m	LAT	-0.2m
Comments			

BERTH OPERATOR

NAME	BAE Systems	CONTACT DETAILS	0141 445 8000
------	-------------	-----------------	---------------

COMMENTS:

Consultation required with Harbour Master for all vessel movements to and from this berth.