



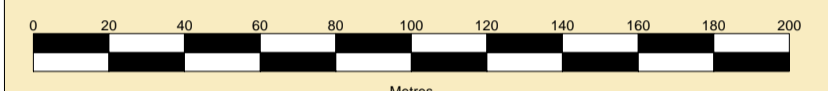
MERSEY DOCKS AND HARBOUR COMPANY LTD

Gary Doyle
Group Harbour Master

Liverpool River

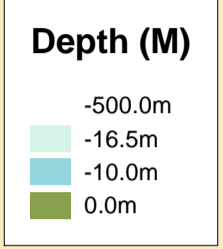
**LPR001_11_2024_002
LIVERPOOL 2 &
APPROACHES**

SCALE 1:2000 at A1



DEPTHS
Depths are in metres and are reduced to chart datum being 4.93m below Ordnance Datum (Newlyn), which is approximately the level of Lowest Astronomical Tide.

HEIGHTS
Heights are in metres. Underlined figures show heights above Chart Datum.



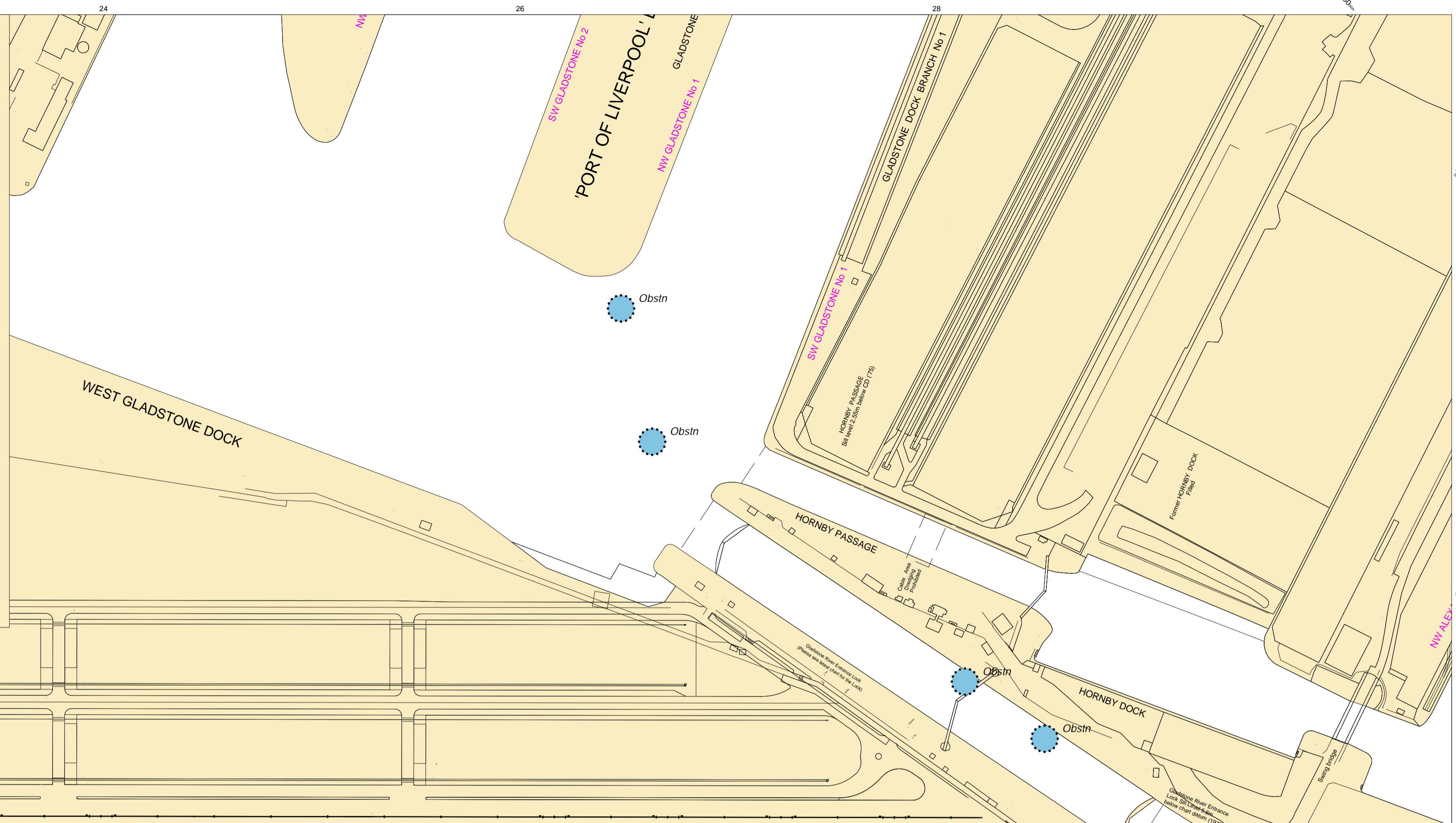
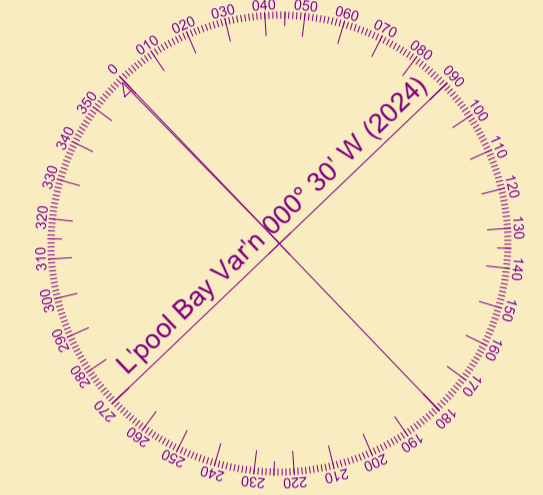
TOPOGRAPHY
The shore features on this chart are based largely on Ordnance Survey digital mapping data with permission of HMSO. © Crown Copyright 2024. Peel Licence Number 100018033.

FLATS & SANDBANKS
CAUTION OWING TO FREQUENT CHANGES IN DEPTHS AND POSITIONS OF FLATS AND SANDBANKS THIS CHART SHOULD BE USED WITH CAUTION.

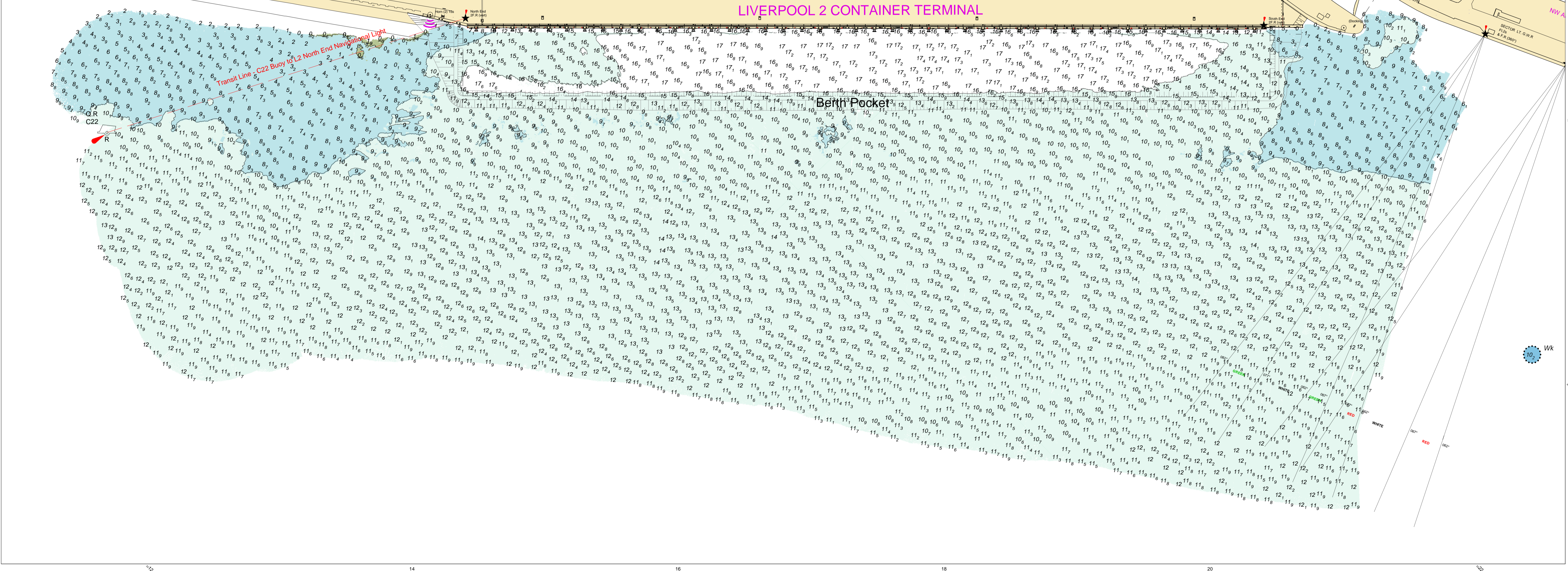
Surveyed by: AD
Processed by: NM
Checked by: NM
Surveyed: 3rd September 2024
Issued: 5th September 2024
Vessel: Royal Charter

POSITIONS
Positions are referred to OSGB36 National Grid Datum.

UKHO & NTMS
When using this chart please refer to UKHO Admiralty Publications and also local Notice to Mariners and Navigational Warnings.



LIVERPOOL 2 CONTAINER TERMINAL



Transit Line C22 Buoy to L2 North End Navigational Light

Berth Pocket

10. WK