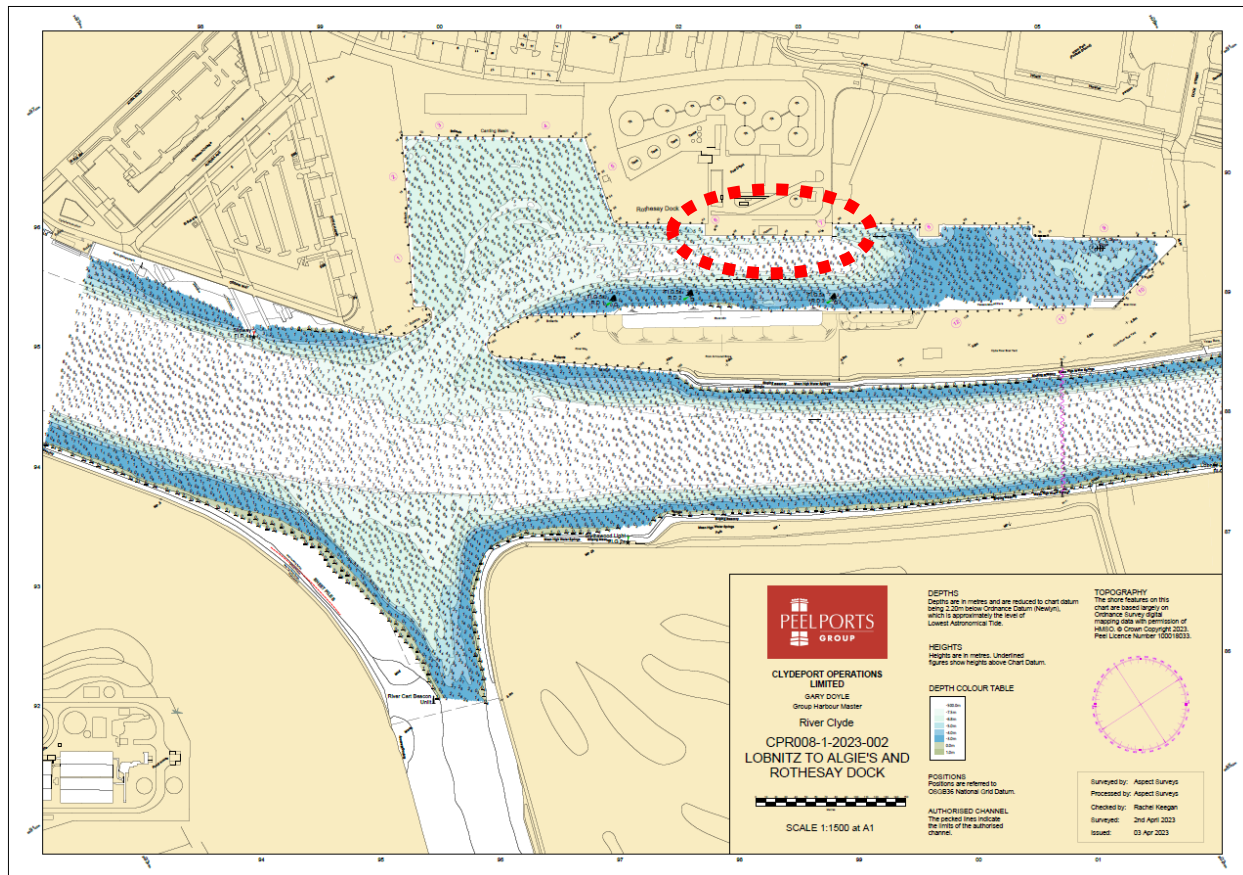
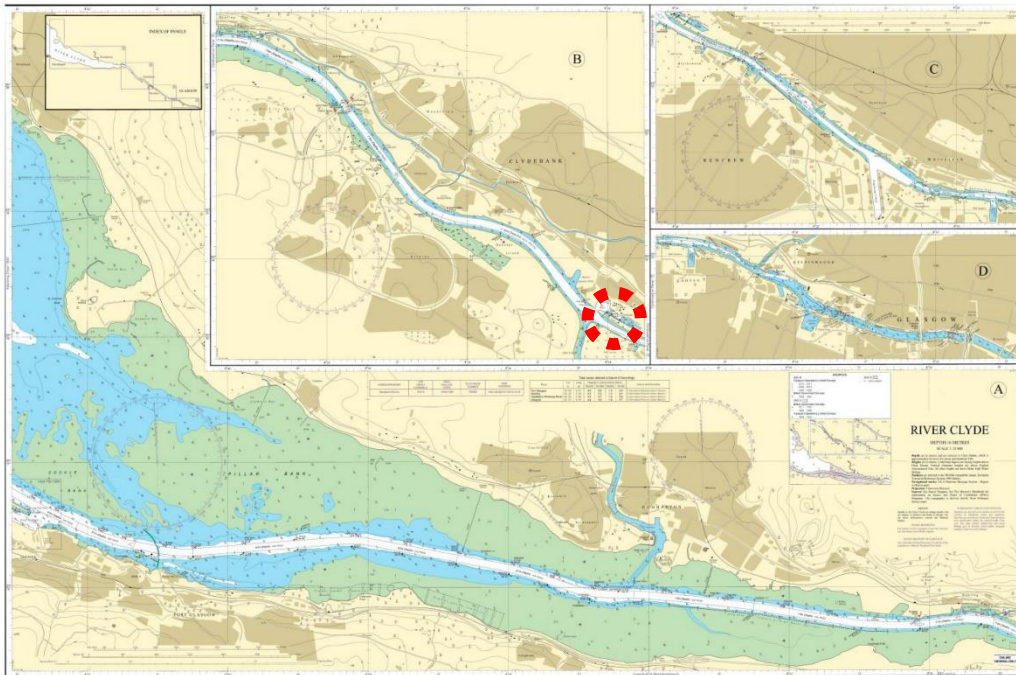


BERTH DATA SHEET

ROTHESAY DOCK FUEL TERMINAL - CLYDEBANK



BERTH DATA SHEET

ROTHESAY DOCK FUEL TERMINAL - CLYDEBANK



PARTICULARS/BASIC INFORMATION

Admiralty Chart No.	2007 Plan B	Survey Drawing No	CPR 008-1
Min. Depth Alongside	Refer Survey Drawing	Fendering	Yokohama fenders
Quay Design	Solid concrete	Avg Water Density	1006.6 kg/m ³
Latitude	55°53.55'N	Longitude	004°23.86'W
Quay length overall	127m	Eastings/Northings	412591, 6194998
No of berths	1	SWL Bollards	75T
Max vessel LOA	160m	Avg bollard spacing	25m
Max vessel beam	23.30m	Line of the berth	122°/302°
Air Draught restrictions	Erskine Bridge	Quayside SWL	
ISPS Status	Compliant	Height of cope edge*	6.93m

*from Chart Datum

** up to 49.8m from MHWS unrestricted, up to 53.3m from MHWS 3 months' notice

QUAYSIDE FACILITIES – BY PRIOR ARRANGEMENT

Fresh Water	No	Shore Power	No
Port Waste	Yes	Cranes	No

TIDAL INFORMATION – BASED ON Clydebank

HAT	5.1m	MHWS	4.5m
MHWN	3.7m	MLWN	1.6m
MLWS	0.6m	LAT	-0.1m
Comments			

BERTH OPERATOR

NAME	Interterminals	CONTACT DETAILS	0141 435 8000
------	----------------	-----------------	---------------

COMMENTS:

Rothesay Dock Fuel berth is used for the import of refined fuels

Berth 5 is not normally used as it is obstructed by the Fire Water Pump house for the fuel terminal

Current survey data is provided on <https://www.peelports.com/marine-information?port=clydeport> under 'Hydrographic Information' which should be consulted for latest berth depth information.

Vessels must be able to discharge to berth depth by Low Water (+HOT)

Refer to Clydeport Towage Matrix for guidance on tug requirements.