



MERSEY DOCKS AND HARBOUR COMPANY LTD

Gary Doyle
Group Harbour Master

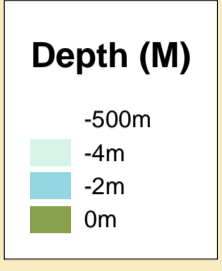
Liverpool Docks

LPD001_1_2025_001C SEAFORTH DOCK WEST SECTION

Surveyed by: VO
Processed by: VO
Checked by: WLH
Surveyed: 28th February 2025
Issued: 28th February 2025
Vessel: Porth Wen

DEPTHS
Depths are in metres and are reduced to chart datum being 4.93m below Ordnance Datum (Newlyn), which is approximately the level of Lowest Astronomical Tide.

HEIGHTS
Heights are in metres. Underlined figures show heights above Chart Datum.

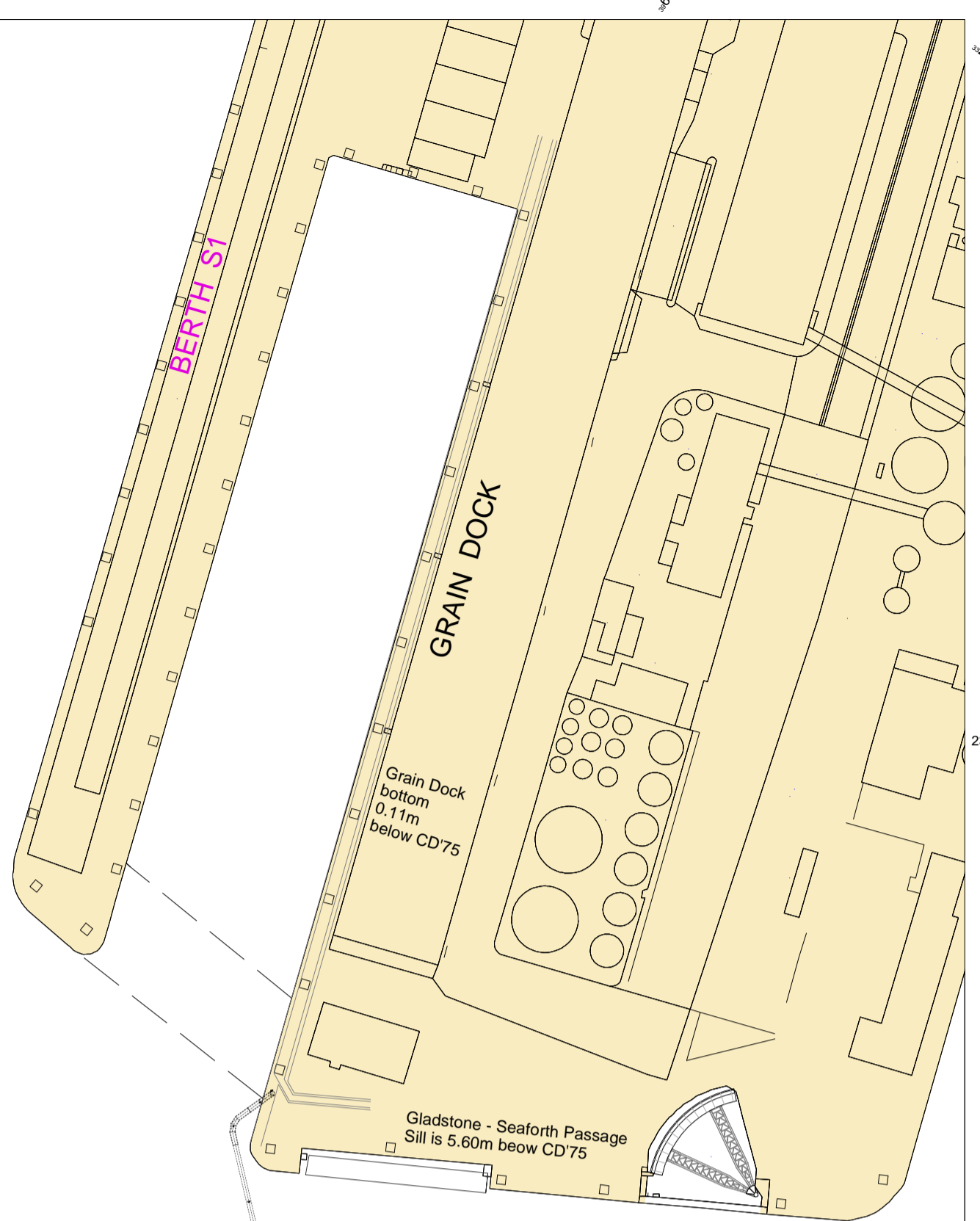
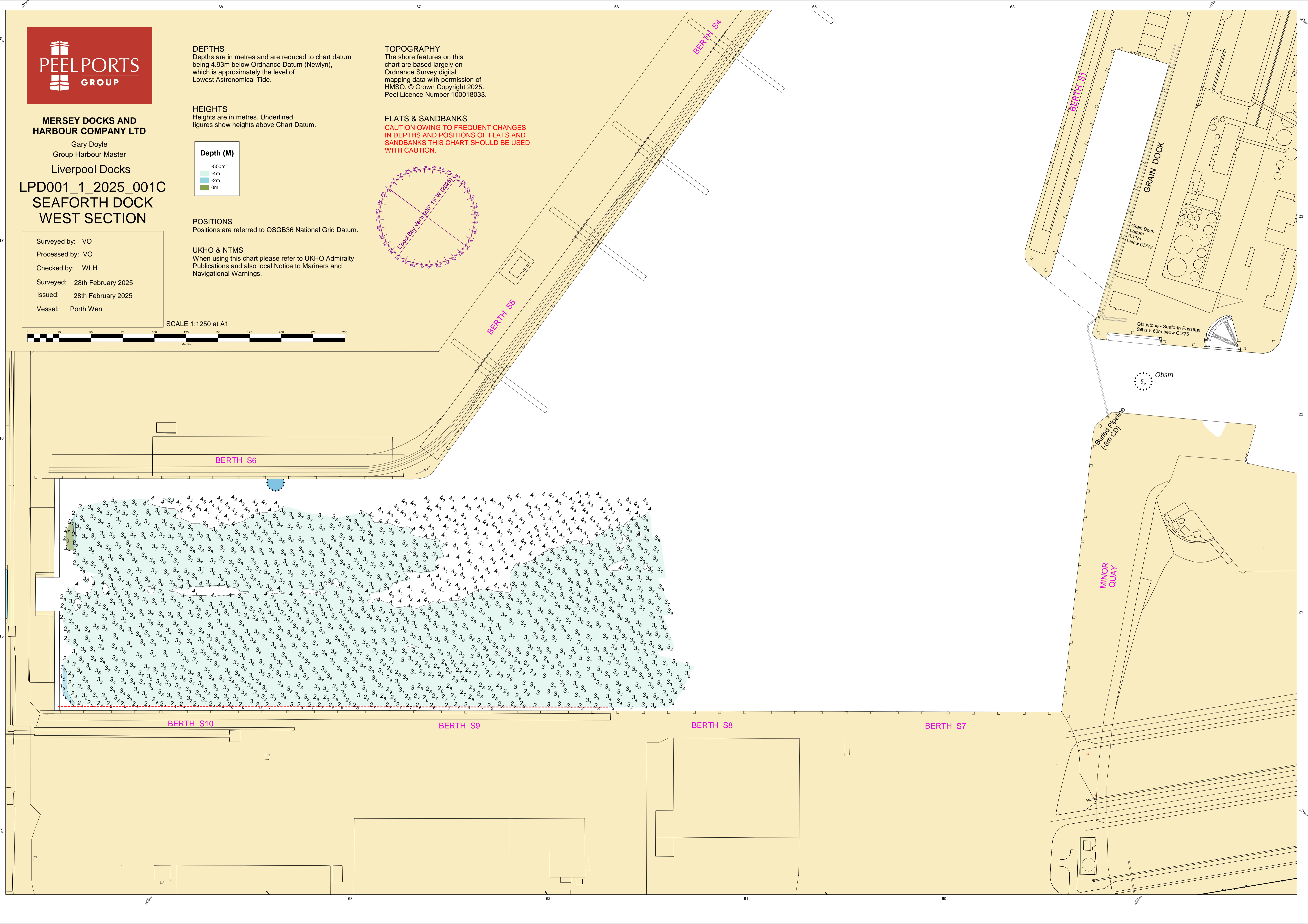
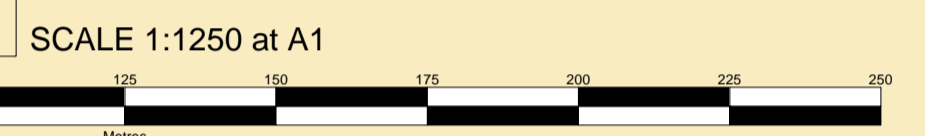
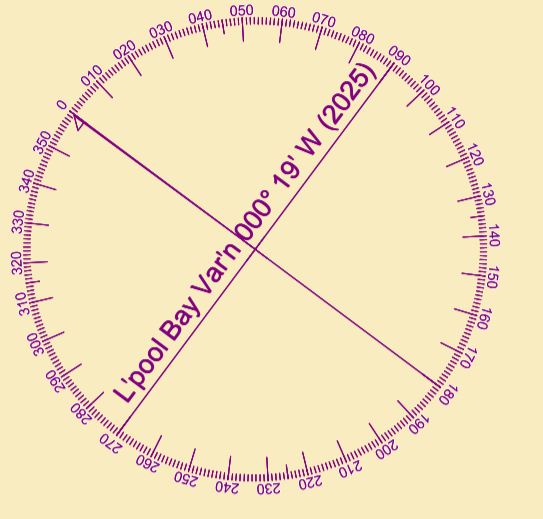


POSITIONS
Positions are referred to OSGB36 National Grid Datum.

UKHO & NTMS
When using this chart please refer to UKHO Admiralty Publications and also local Notice to Mariners and Navigational Warnings.

TOPOGRAPHY
The shore features on this chart are based largely on Ordnance Survey digital mapping data with permission of HMSO. © Crown Copyright 2025. Peel Licence Number 100018033.

FLATS & SANDBANKS
CAUTION OWING TO FREQUENT CHANGES IN DEPTHS AND POSITIONS OF FLATS AND SANDBANKS THIS CHART SHOULD BE USED WITH CAUTION.



Obstn
5.3

Buried Pipeline
(8m CD)

MINOR QUAY

BERTH S6

BERTH S5

BERTH S8

BERTH S7

BERTH S10

BERTH S9

BERTH S4

BERTH S1

GRAIN DOCK