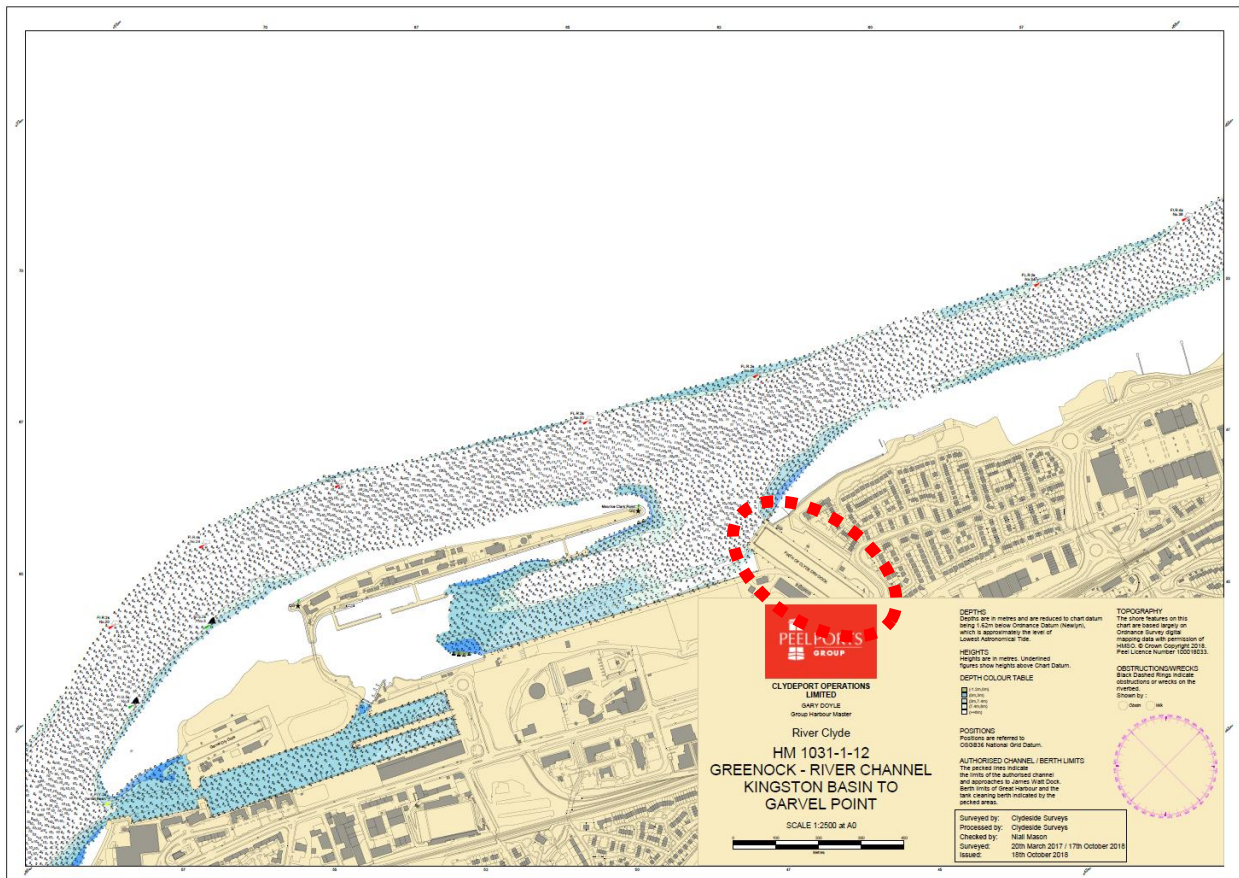
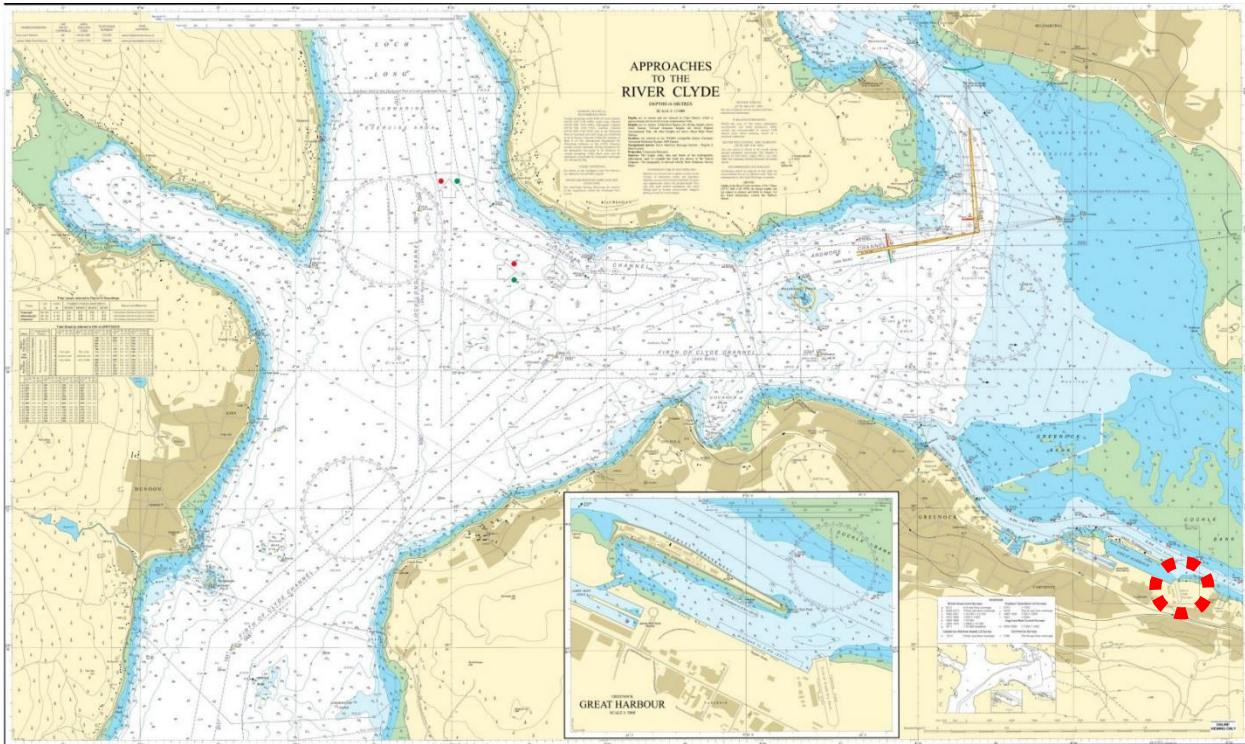


BERTH DATA SHEET

INCHGREEN DRY DOCK - GREENOCK



BERTH DATA SHEET

INCHGREEN DRY DOCK - GREENOCK



PARTICULARS/BASIC INFORMATION

Admiralty Chart No.	1994	Survey Drawing No	HM-1133-1 & 1133-2
Min. Depth Alongside	Refer Survey Drawing	Fendering	None
Quay Design	N/A	Avg Water Density	1018 kg/m ³
Latitude	55°56.40'N	Longitude	004°42.65'W
Drydock length overall	304.8m	Eastings/Northings	393139, 6200723
Drydock width	45.72m	SWL Bollards	Untested
No of berths	Dry Dock	Avg bollard spacing	-
		Line of the berth	168°/348°
Air Draught restrictions	None	Quayside SWL	-
ISPS Status	-	Height of cope edge*	+ 5.8m

*from Chart Datum

QUAYSIDE FACILITIES – BY PRIOR ARRANGEMENT

Fresh Water	Yes	Shore Power	By arrangement only
Port Waste	Yes	Cranes	Mobile crane possible

TIDAL INFORMATION – BASED ON GREENOCK

HAT	4.5m	MHWS	3.4m
MHWN	3.0m	MLWN	1.0m
MLWS	0.3m	LAT	-0.3m
Comments			

BERTH OPERATOR

NAME	Peel Ports	CONTACT DETAILS	01475 726171
------	------------	-----------------	--------------

COMMENTS:

Dock floor at the head is -7.8m and at the gate -9.25m from CD
The Cill level is -7.8m and gate level is -7.5m in gate open position
Ground level (cope) is +5.8m

CD reads 0.0m on the Clydeport Tide Board at the west side of the dry dock

Dock width is 150ft/45.72m, however, the dock entrance at gate is 145ft/44.20m.
Length of dock is 1000ft/304.80m.

Full prior consultation will be required for all vessels entering the dock