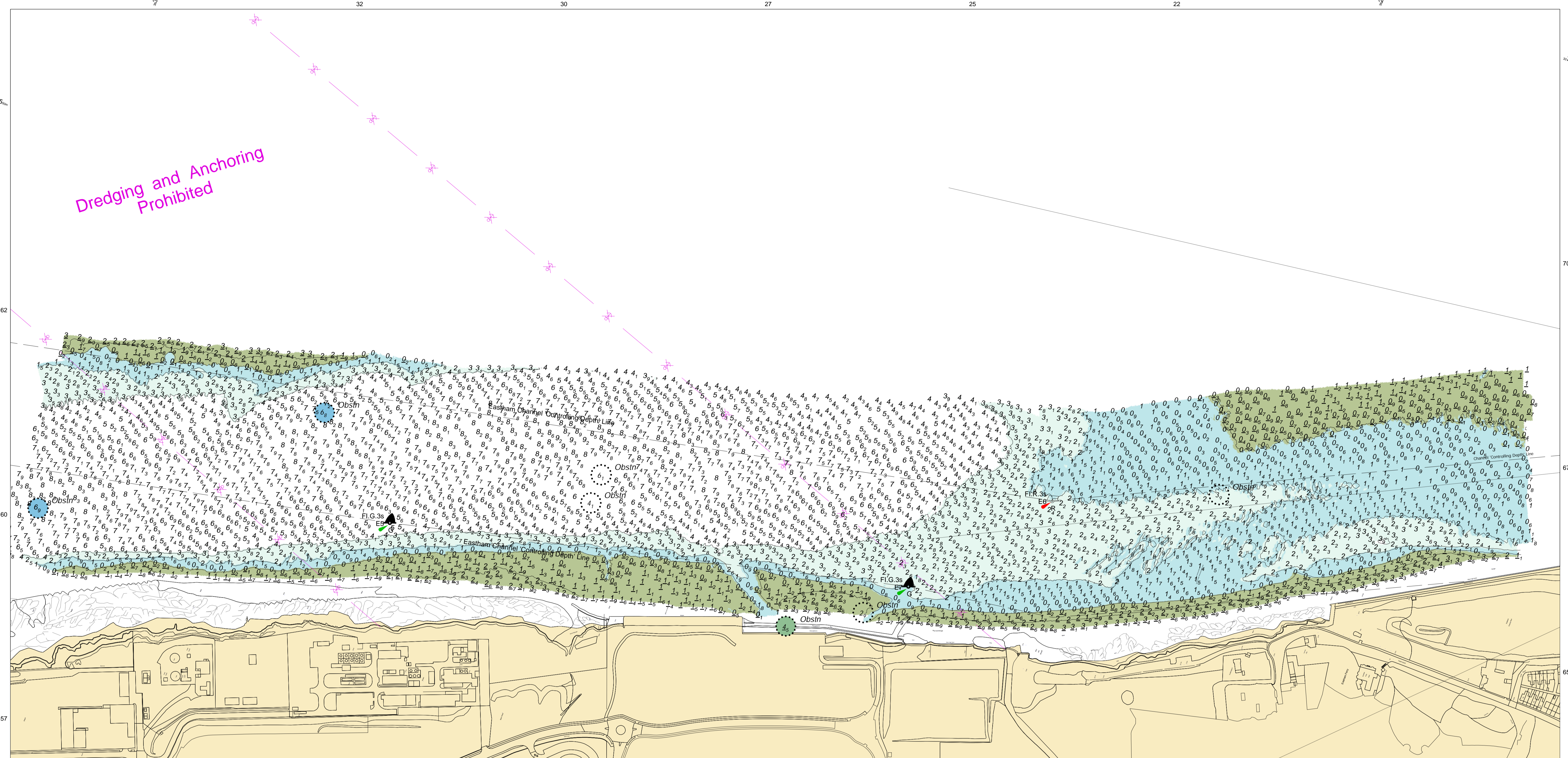


Dredging and Anchoring Prohibited



MERSEY DOCKS AND HARBOUR COMPANY LTD

Gary Doyle  
Group Harbour Master

River Mersey

LPR003\_3\_2024\_005  
Eastham Channel South

**DEPTHS**

Depths are in metres and are reduced to chart datum being 4.93m below Ordnance Datum (Newlyn), which is approximately the level of Lowest Astronomical Tide.

**HEIGHTS**

Heights are in metres. Underlined figures show heights above Chart Datum.

**POSITIONS**

Positions are referred to OSGB36 National Grid Datum, UKHO & NTMS

When using this chart please refer to UKHO Admiralty Publications and also local Notice to Mariners and Navigational Warnings.

**TOPOGRAPHY**

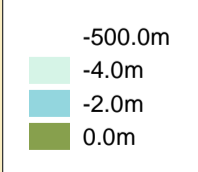
The shore features on this chart are based largely on Ordnance Survey digital mapping data with permission of HMSO. © Crown Copyright 2024. Peel Licence Number 100018033.

**FLATS & SANDBANKS**

**CAUTION OWING TO FREQUENT CHANGES IN DEPTHS AND POSITIONS OF FLATS AND SANDBANKS THIS CHART SHOULD BE USED WITH CAUTION.**

Surveyed by: RK  
Processed by: RK  
Checked by: RK  
Surveyed: 20th June 2024  
Issued: 21st June 2024  
Vessel: Royal Charter

**Depth (M)**



SCALE 1:2500 at A1

