



MERSEY DOCKS AND HARBOUR COMPANY LTD

Gary Doyle
Group Harbour Master

River Mersey

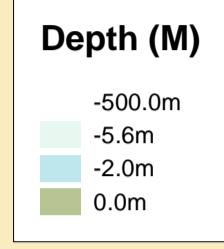
LPR001_2_2024_006

Gladstone River Entrance

Vessel:	Royal Charter
Surveyed by:	REL
Processed by:	REL
Checked by:	NM
Surveyed:	29th November 2024
Issued:	02nd December 2024
Lock Surveyed:	30th October 2024

DEPTHS
Depths are in metres and are reduced to chart datum being 4.93m below Ordnance Datum (Newlyn), which is approximately the level of Lowest Astronomical Tide.

HEIGHTS
Heights are in metres. Underlined figures show heights above Chart Datum.

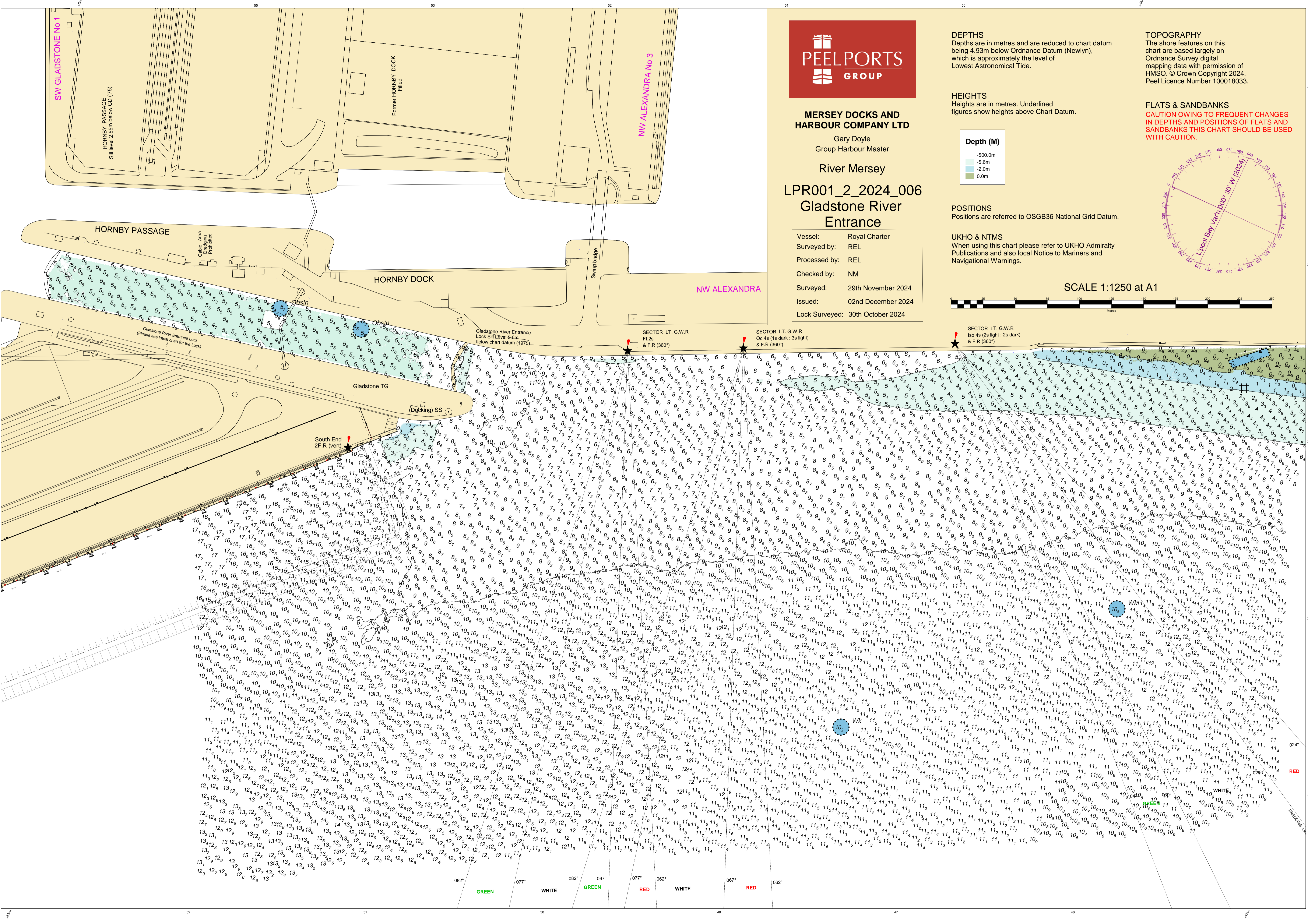
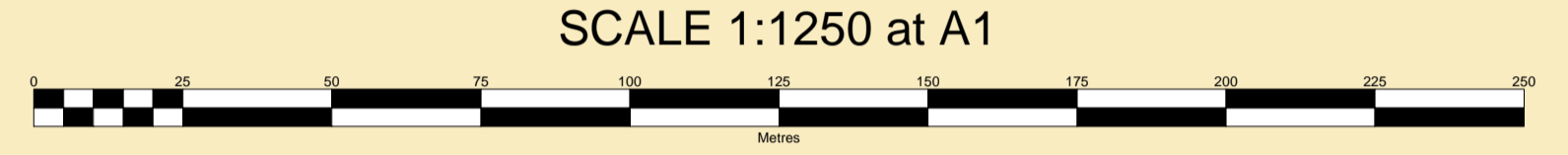
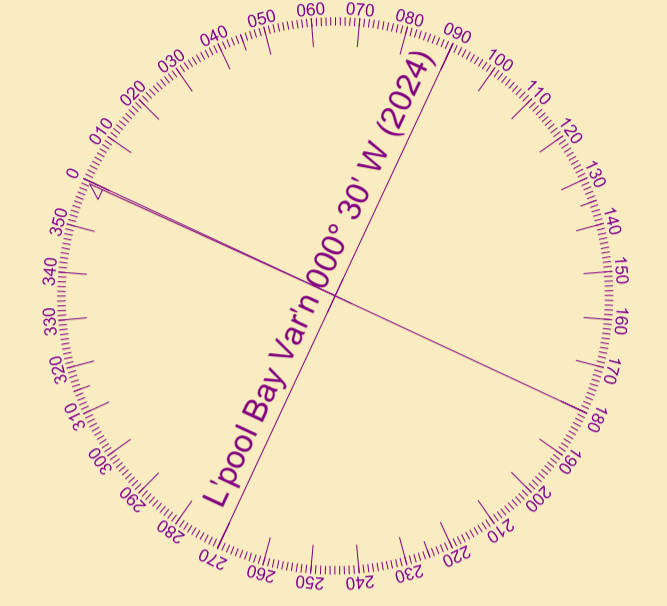


POSITIONS
Positions are referred to OSGB36 National Grid Datum.

UKHO & NTMS
When using this chart please refer to UKHO Admiralty Publications and also local Notice to Mariners and Navigational Warnings.

TOPOGRAPHY
The shore features on this chart are based largely on Ordnance Survey digital mapping data with permission of HMSO. © Crown Copyright 2024. Peel Licence Number 100018033.

FLATS & SANDBANKS
CAUTION OWING TO FREQUENT CHANGES IN DEPTHS AND POSITIONS OF FLATS AND SANDBANKS THIS CHART SHOULD BE USED WITH CAUTION.



SW GLADSTONE No 1
HORNBY PASSAGE
Sill level 2.5m below CD (75)

HORNBY PASSAGE
Cable Area Prohibited
Obstr

HORNBY DOCK
Former HORNBY DOCK Filled
Swing bridge
Gladstone TG
(Docking) SS
South End 2F.R (vert)

NW ALEXANDRA No 3
Former HORNBY DOCK Filled

NW ALEXANDRA
Gladstone River Entrance Lock Sill Level 5.6m below chart datum (1975)

SECTOR LT. G.W.R
Fl 2s
& F.R (360°)

SECTOR LT. G.W.R
Oc 4s (1s dark : 3s light)
& F.R (360°)

SECTOR LT. G.W.R
Iso 4s (2s light : 2s dark)
& F.R (360°)

082° GREEN 077° WHITE 082° GREEN 067° RED 067° WHITE 067° RED 062°