



MERSEY DOCKS AND HARBOUR COMPANY LTD

Gary Doyle
Group Harbour Master

Liverpool Channel

LPC004_6_2024_007

Crosby Shoal

DEPTHS

Depths are in metres and are reduced to chart datum being 4.93m below Ordnance Datum (Newlyn), which is approximately the level of Lowest Astronomical Tide.

HEIGHTS

Heights are in metres. Underlined figures show heights above Chart Datum.

Depth (M)

- 500.0m
- 8.0m
- 7.5m
- 6.9m
- 5.0m
- 0.0m

Dredge Line

POSITIONS

Positions are referred to OSGB36 National Grid Datum.

UKHO & NTMS

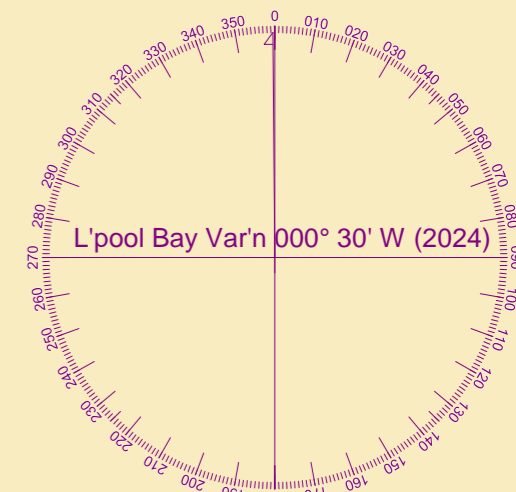
When using this chart please refer to UKHO Admiralty Publications and also local Notice to Mariners and Navigational Warnings.

TOPOGRAPHY

The shore features on this chart are based largely on Ordnance Survey digital mapping data with permission of HMSO. © Crown Copyright 2024. Peel Licence Number 100018033.

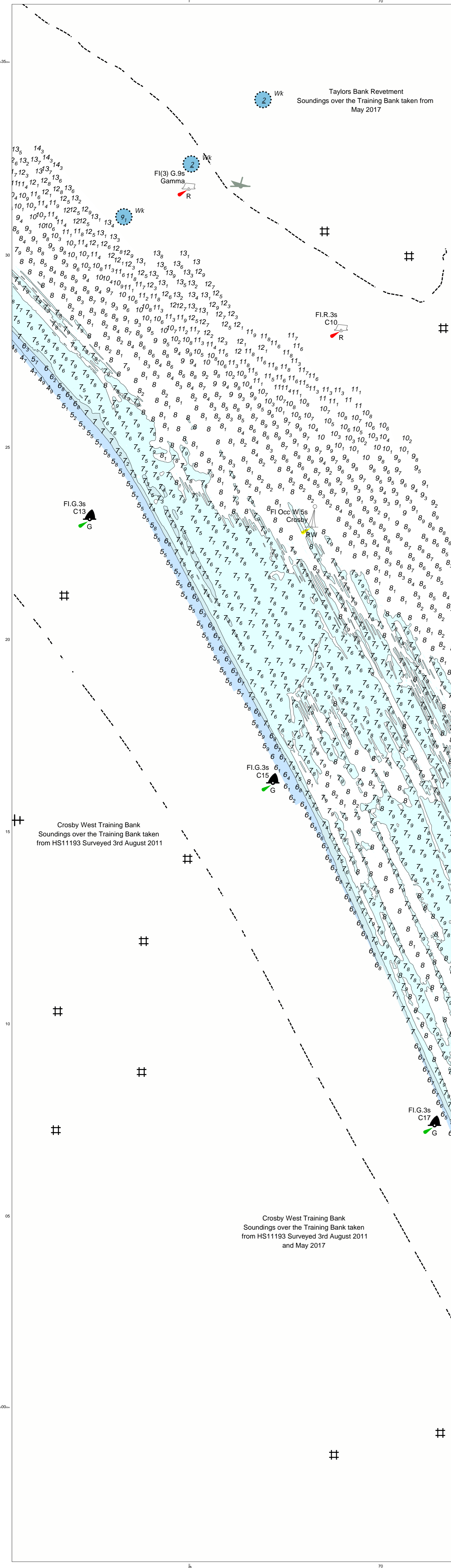
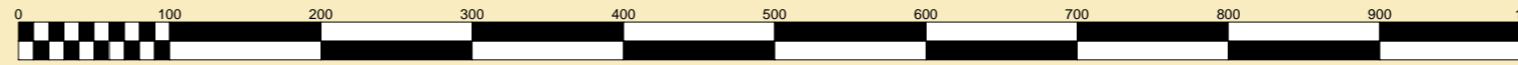
FLATS & SANDBANKS

CAUTION OWING TO FREQUENT CHANGES IN DEPTHS AND POSITIONS OF FLATS AND SANDBANKS THIS CHART SHOULD BE USED WITH CAUTION.



Vessel:	Porth Wen
Surveyed by:	VO
Processed by:	VO
Checked by:	NM
Surveyed:	27th November 2024
Issued:	29th November 2024

SCALE 1:5000 at A1



North Tip of Crosby East Training Bank
Soundings over the Training Bank taken from HS1195 Surveyed 4th August 2011

Crosby East Training Bank

All other Crosby East Training Bank
Soundings over the Training Bank taken from May 2017

Crosby West Training Bank
Soundings over the Training Bank taken from HS11193 Surveyed 3rd August 2011

Crosby West Training Bank
Soundings over the Training Bank taken from HS11193 Surveyed 3rd August 2011 and May 2017

Taylor's Bank Revetment
Soundings over the Training Bank taken from May 2017

Fl(3) G.9s
Gamma

Fl.R.3s
C10

Fl.G.3s
C13

Fl.G.3s
C15

Fl.G.3s
C17

Fl.R.3s
C12

Fl.R.3s
C14

Fl.G.3s
C19