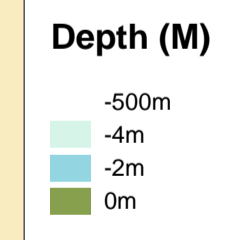


MERSEY DOCKS AND HARBOUR COMPANY LTD
 Gary Doyle
 Group Harbour Master
 Liverpool Docks

LPD001_2_2024_014
Seaforth Dock Centre & East

DEPTHS
 Depths are in metres and are reduced to chart datum being 4.93m below Ordnance Datum (Newlyn), which is approximately the level of Lowest Astronomical Tide.

HEIGHTS
 Heights are in metres. Underlined figures show heights above Chart Datum.

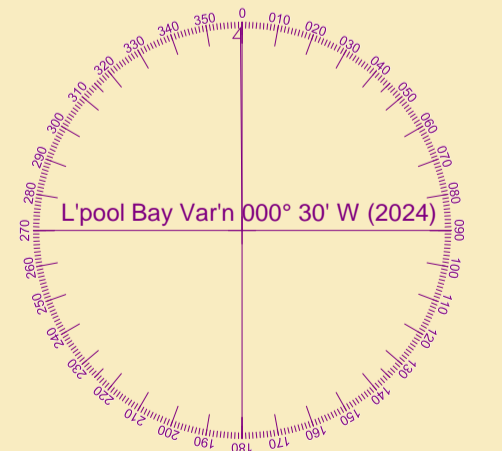


POSITIONS
 Positions are referred to OSGB36 National Grid Datum.

UKHO & NTMS
 When using this chart please refer to UKHO Admiralty Publications and also local Notice to Mariners and Navigational Warnings.

TOPOGRAPHY
 The shore features on this chart are based largely on Ordnance Survey digital mapping data with permission of HMSO. © Crown Copyright 2024. Peel Licence Number 100018033.

FLATS & SANDBANKS
CAUTION OWING TO FREQUENT CHANGES IN DEPTHS AND POSITIONS OF FLATS AND SANDBANKS THIS CHART SHOULD BE USED WITH CAUTION.



Vessel :	Royal Charter
Surveyed by:	VO
Processed by:	VO
Checked by:	WLH
Surveyed:	2nd December 2024
Issued:	24th December 2024

SCALE 1:1250 at A1

