



### MERSEY DOCKS AND HARBOUR COMPANY LTD

Gary Doyle  
Group Harbour Master

River Mersey

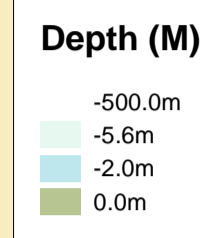
LPR001\_2\_2024\_002

### Gladstone River Entrance

Vessel: Royal Charter  
Surveyed by: RK  
Processed by: RK  
Checked by: RK  
Surveyed: 30th April 2024  
Issued: 1st May 2024  
Lock Surveyed: 30th April 2024

**DEPTHS**  
Depths are in metres and are reduced to chart datum being 4.93m below Ordnance Datum (Newlyn), which is approximately the level of Lowest Astronomical Tide.

**HEIGHTS**  
Heights are in metres. Underlined figures show heights above Chart Datum.

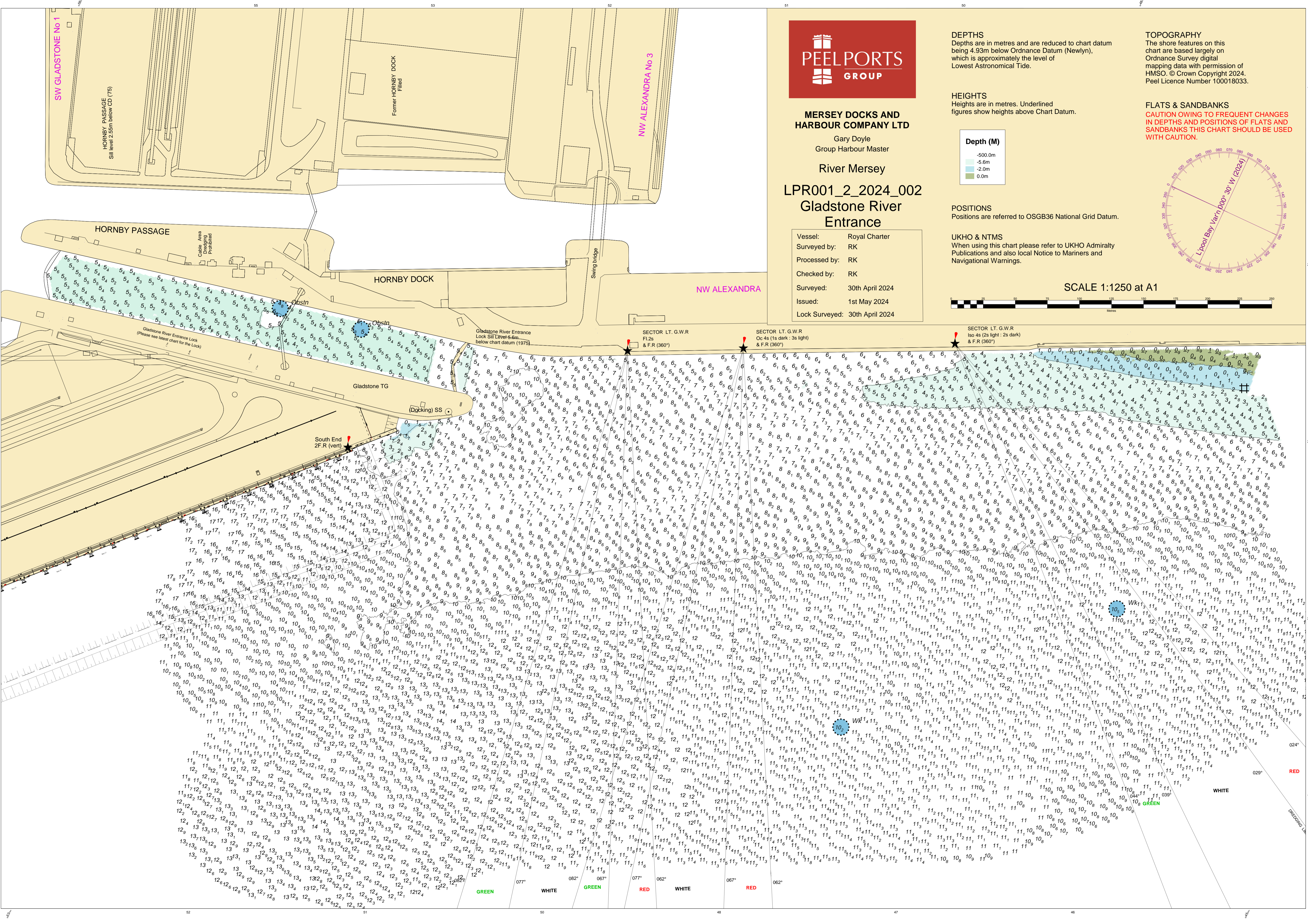
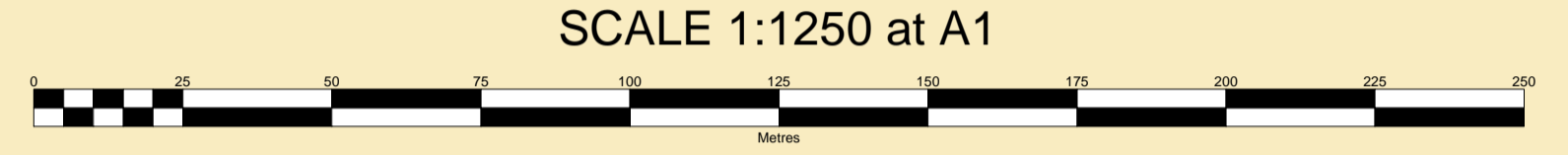
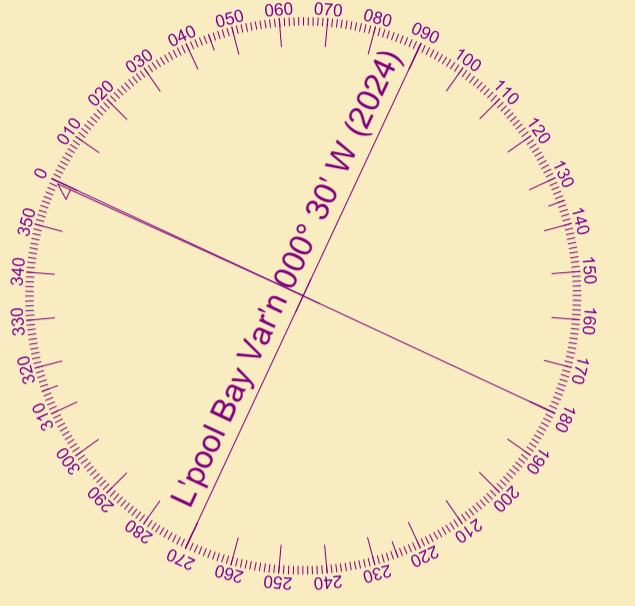


**POSITIONS**  
Positions are referred to OSG36 National Grid Datum.

**UKHO & NTMS**  
When using this chart please refer to UKHO Admiralty Publications and also local Notice to Mariners and Navigational Warnings.

**TOPOGRAPHY**  
The shore features on this chart are based largely on Ordnance Survey digital mapping data with permission of HMSO. © Crown Copyright 2024. Peel Licence Number 100018033.

**FLATS & SANDBANKS**  
**CAUTION OWING TO FREQUENT CHANGES IN DEPTHS AND POSITIONS OF FLATS AND SANDBANKS THIS CHART SHOULD BE USED WITH CAUTION.**



SW GLADSTONE No 1

NW ALEXANDRA No 3

NW ALEXANDRA

HORNBY PASSAGE

HORNBY DOCK

South End 2F.R. (vert)

Gladstone TG

(Docking) SS

Gladstone River Entrance Lock Sill Level 5.6m below chart datum (1975)

SECTOR LT. G.W.R. Flts & F.R. (360°)

SECTOR LT. G.W.R. Oc 4s (1s dark : 3s light) & F.R. (360°)

SECTOR LT. G.W.R. Iso 4s (2s light : 2s dark) & F.R. (360°)

Obstr

Swing bridge

Gladstone River Entrance Lock (Please see latest chart for the Lock)

Cable Area Prohibited

Former HORNBY DOCK Filled

HORNBY PASSAGE Sill level 2.5m below CD (75)

WHITE

GREEN

RED

WHITE

RED

WHITE

RED