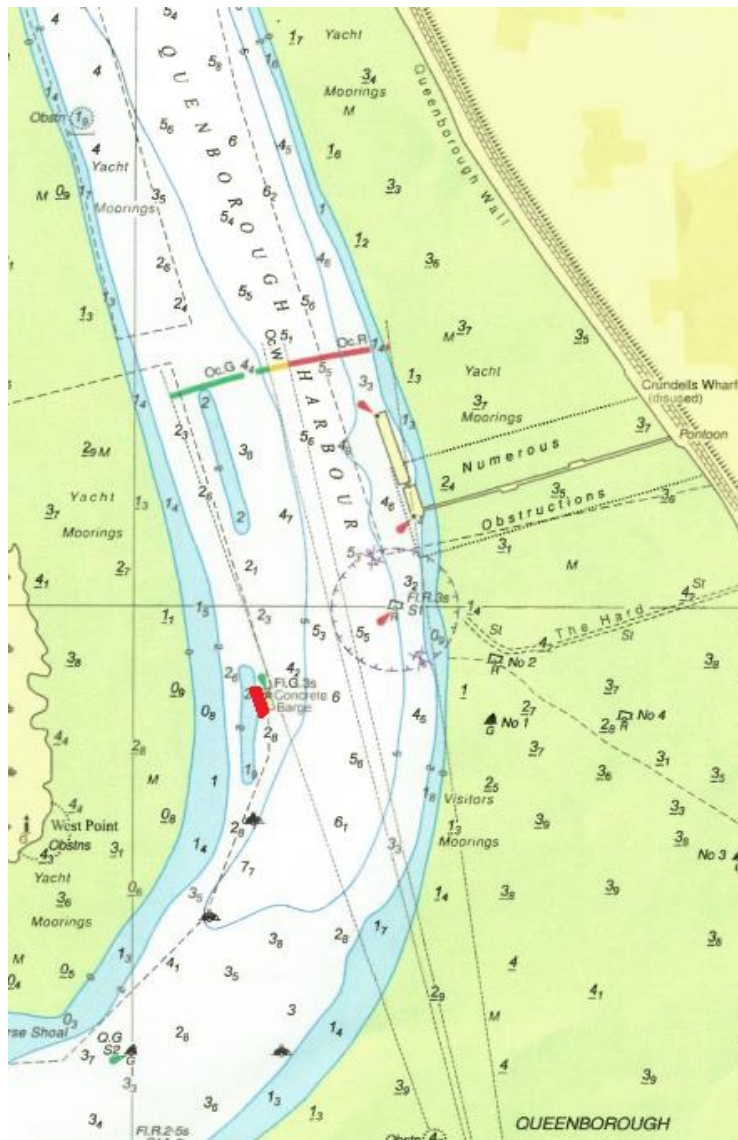


NtoM 062 - 2024

The Swale – Queenborough Harbour Concrete Lighter – Sunken Vessel

NOTICE IS HEREBY GIVEN that a sunken vessel is obstructing the western side of the concrete lighter in Queenborough Harbour. The boat is secured to the lighter by the bow with part of the hull still visible, the owner has been contacted and instructed to initiate salvage as soon as possible. All vessels are required to navigate with caution in vicinity of the concrete lighter and keep clear of the western flank until further notice.



Issued on behalf of Port of Sheerness Ltd, the Statutory Harbour Authority for the River Medway and The Swale
Telephone calls, VHF radio traffic, CCTV and radar traffic images may be recorded at
the Peel Ports Group Port Control Centre, Liverpool.



Changes to the status of the sunken craft will promulgated via updates to this notice to mariners.

Further information may be obtained from Medway VTS on VHF Channel 74, call sign “Medway VTS” or telephone 0151 949 6148 or 0151 949 6650. **(Recorded Lines)**

**Marine Operations Department
Peel Ports London Medway**

Notice Issued: 27th November 2024
Notice Expiry: TBC