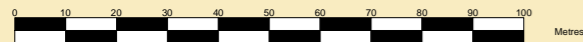




**MERSEY DOCKS AD
HARBOUR COMPANY LTD**

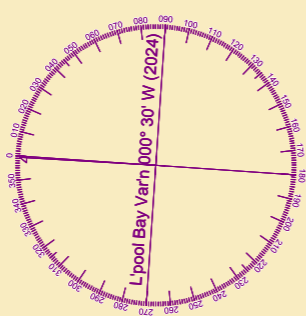
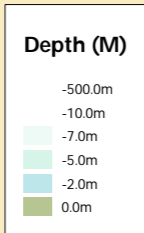
GARY DOYLE
Group Harbour Master
River Mersey
LPR001_18_2024_009
Isle of Man
Ferry Terminal

SCALE 1:1500 at A3



DEPTHS
Depths are in metres and are reduced to chart datum being 4.93m below OD(N), which is approximately the level of the Lowest Astronomical Tide.

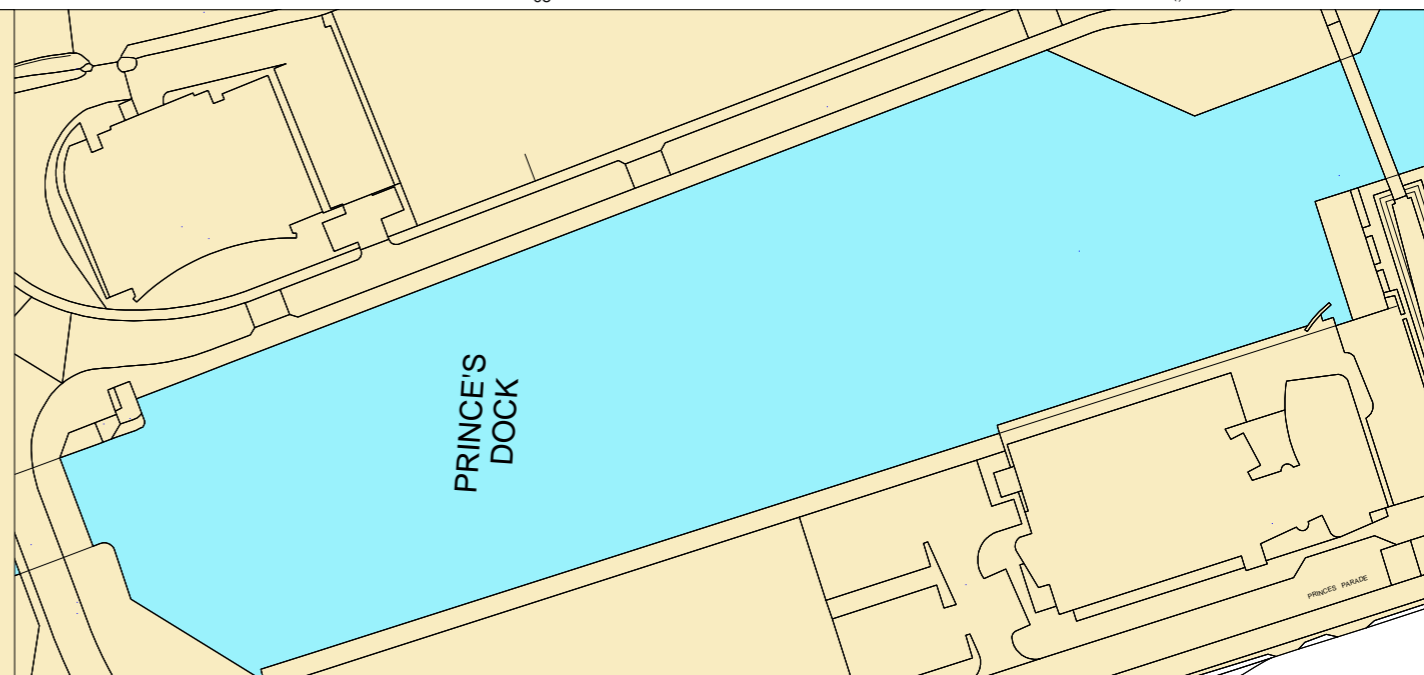
HEIGHTS
Heights are in metres.
Underlined figures show heights above Chart Datum.



POSITIONS
Positions are referred to OSGB36 National Grid Datum.

TOPOGRAPHY
The shore features on this chart are based largely on Ordnance Survey digital mapping data with permission of HMSO.
© Crown Copyright 2024.
Peel Licence Number 100018033.

Surveyed by: VO
Processed by: NM
Checked by: NM
Surveyed: 3rd July 2024
Issued: 5th July 2024



PRINCE'S DOCK

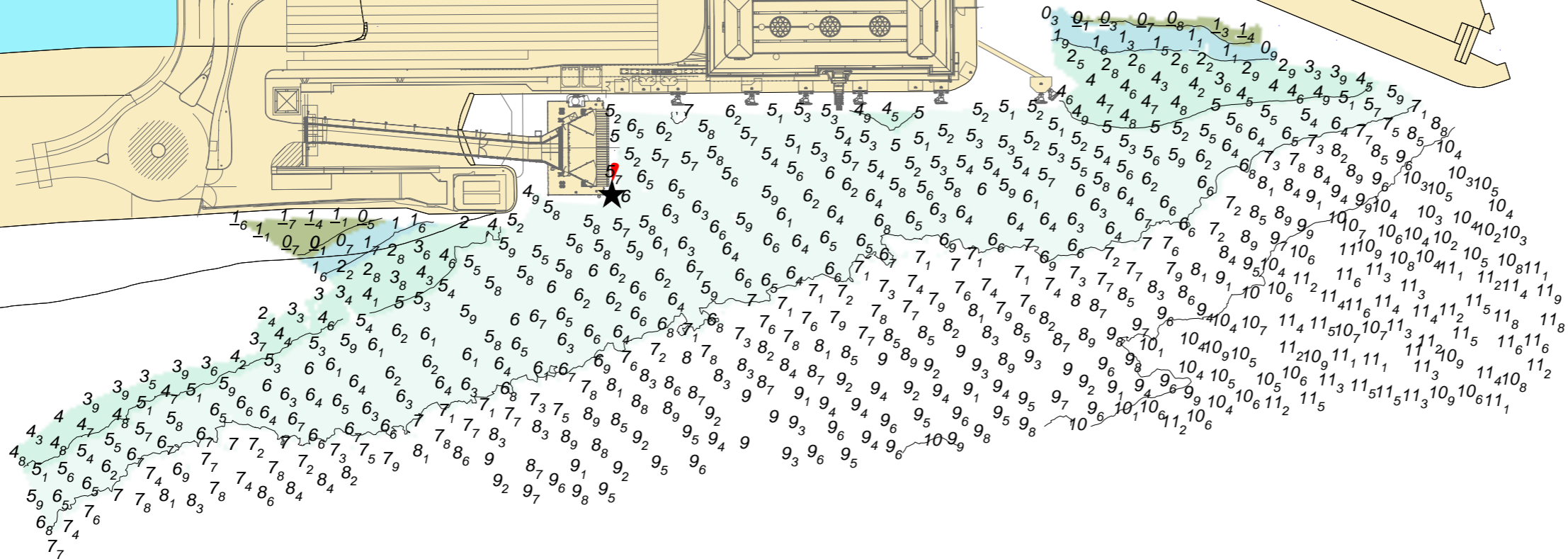
Princes Jetty

Dolphin

3.F.R (inverted tri) Horn (1) 20s

FL.R. 36m

Obstn



336.2m

35

333.7m

312.0m

11

10

08

307.6m

336.2m

35

333.7m

307.6m