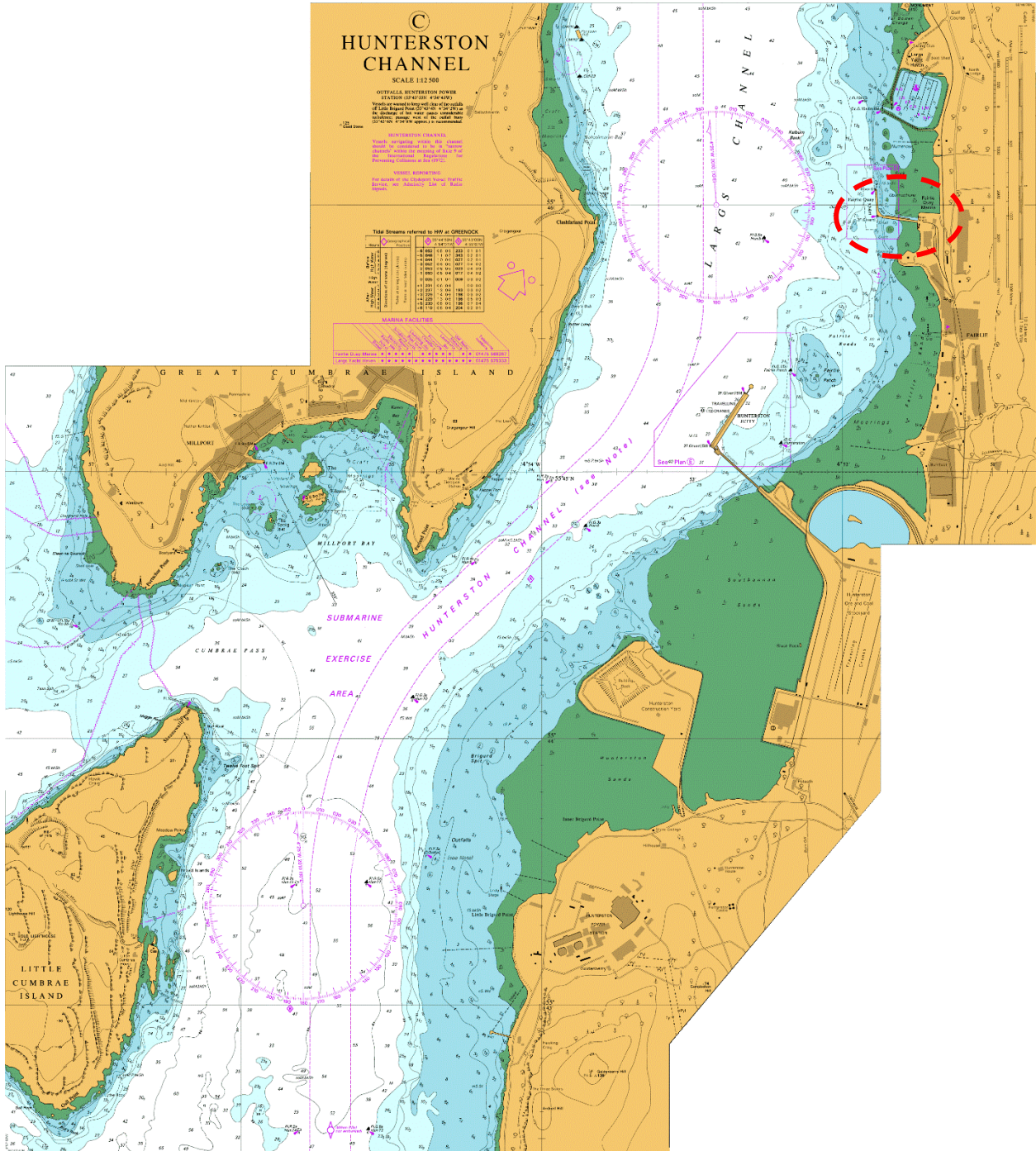


BERTH DATA SHEET

FAIRLIE



BERTH DATA SHEET



FAIRLIE

PARTICULARS/BASIC INFORMATION

Admiralty Chart No.	1867	Survey Drawing No	n/a
Min. Depth Alongside	10m	Fendering	Wooden Piles
Quay Design	Piled Jetty	Avg Water Density	1025 kg/m ³
Latitude	55°46.0'N	Longitude	004°51.8'W
Quay length overall	185m	Eastings/Northings	221163, 656275
No of berths	2	SWL Bollards	30T (plus 2 x 50T)
Max vessel LOA	160m	Avg bollard spacing	18.5m
Max vessel beam	n/a	Line of the berth	176°/356°
Air Draught restrictions	n/a	Quayside SWL	8T per m ²
ISPS Status	Compliant	Height of cope edge*	5m

*from Chart Datum

QUAYSIDE FACILITIES – BY PRIOR ARRANGEMENT

Fresh Water	Yes	Shore Power	Yes
Port Waste	Yes	Cranes	Yes

TIDAL INFORMATION – BASED ON Millport

HAT	3.86m	MHWS	3.39m
MHWN	2.83m	MLWN	1.06m
MLWS	0.44m	LAT	-0.04m
Comments			

BERTH OPERATOR

NAME	Holt Leisure Group	CONTACT DETAILS	01475-568267
------	--------------------	-----------------	--------------

COMMENTS:

Inner berth is 100m in length with depth of 6m.

Generally only used for small workboats and barges.