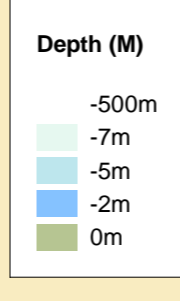




**MERSEY DOCKS AND HARBOUR COMPANY LTD**  
 Gary Doyle  
 Group Harbour Master  
 River Mersey  
**LPR001\_15\_2024\_001**  
**Tranmere Oil Stages to Rock Ferry**



**DEPTHS**  
 Depths are in metres and are reduced to chart datum being 4.93m below Ordnance Datum (Newlyn), which is approximately the level of Lowest Astronomical Tide.

**HEIGHTS**  
 Heights are in metres. Underlined figures show heights above Chart Datum.

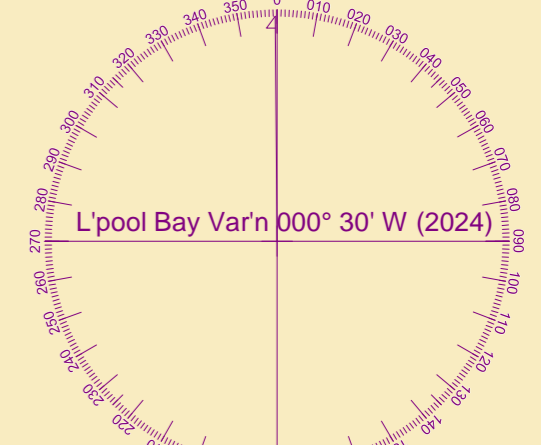
**POSITIONS**  
 Positions are referred to OSGB36 National Grid Datum.

**UKHO & NTMS**  
 When using this chart please refer to UKHO Admiralty Publications and also local Notice to Mariners and Navigational Warnings.

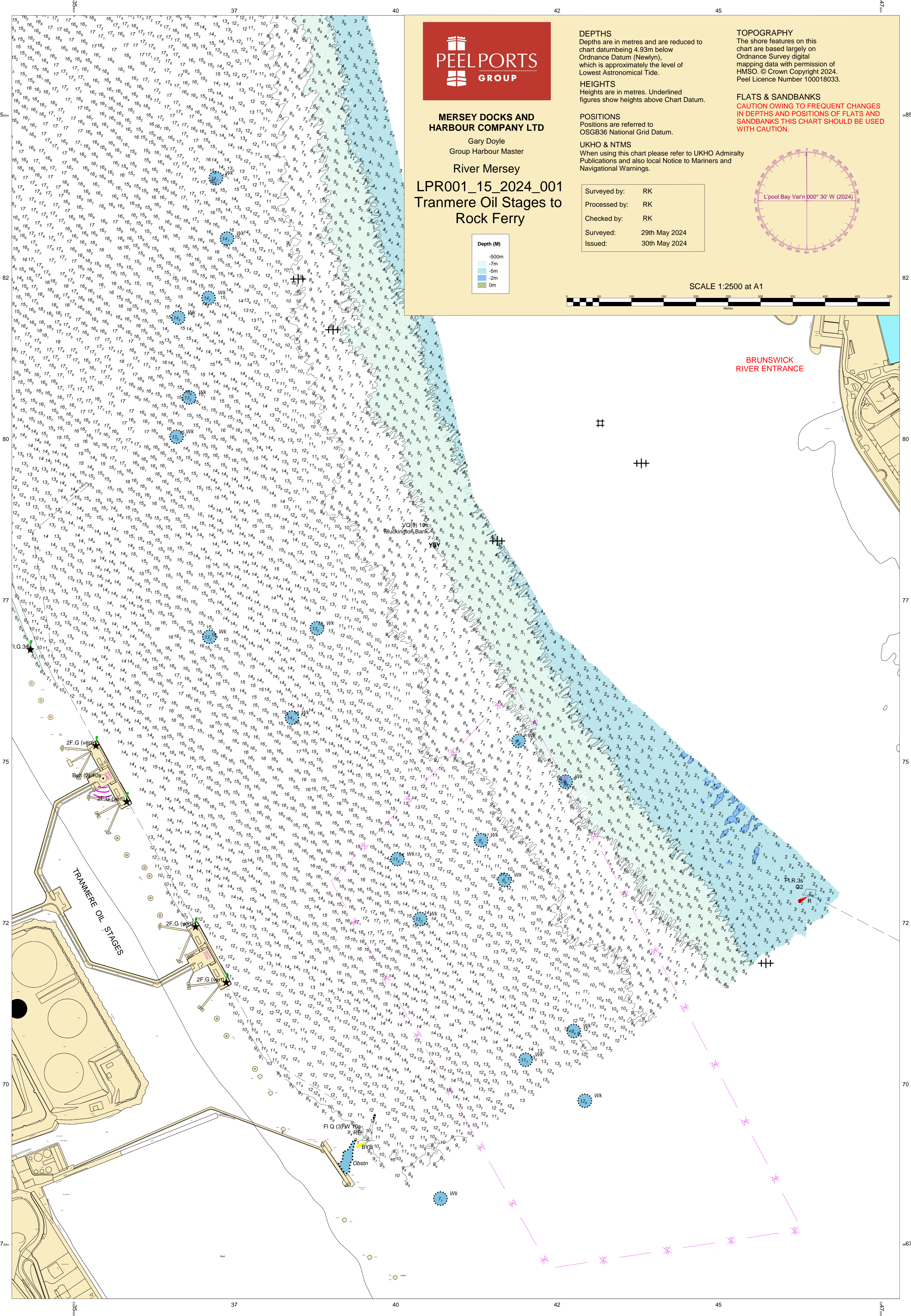
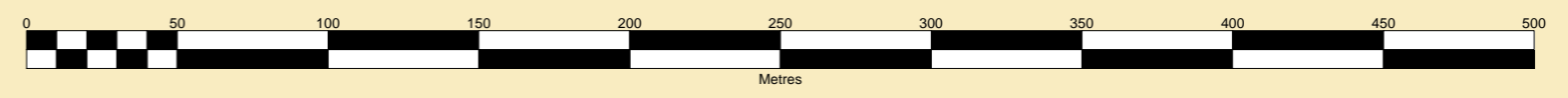
|               |               |
|---------------|---------------|
| Surveyed by:  | RK            |
| Processed by: | RK            |
| Checked by:   | RK            |
| Surveyed:     | 29th May 2024 |
| Issued:       | 30th May 2024 |

**TOPOGRAPHY**  
 The shore features on this chart are based largely on Ordnance Survey digital mapping data with permission of HMSO. © Crown Copyright 2024. Peel Licence Number 100018033.

**FLATS & SANDBANKS**  
**CAUTION OWING TO FREQUENT CHANGES IN DEPTHS AND POSITIONS OF FLATS AND SANDBANKS THIS CHART SHOULD BE USED WITH CAUTION.**

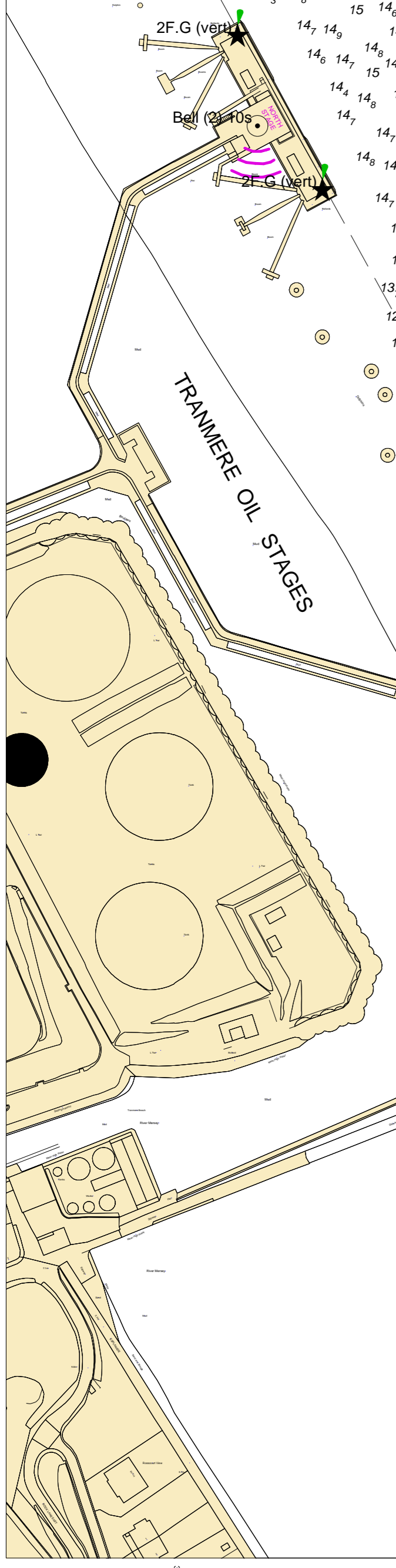


SCALE 1:2500 at A1



**BRUNSWICK RIVER ENTRANCE**

##  
 ++



FI Q (3PW) 100  
 Obsn

FL.R.3s  
 G2