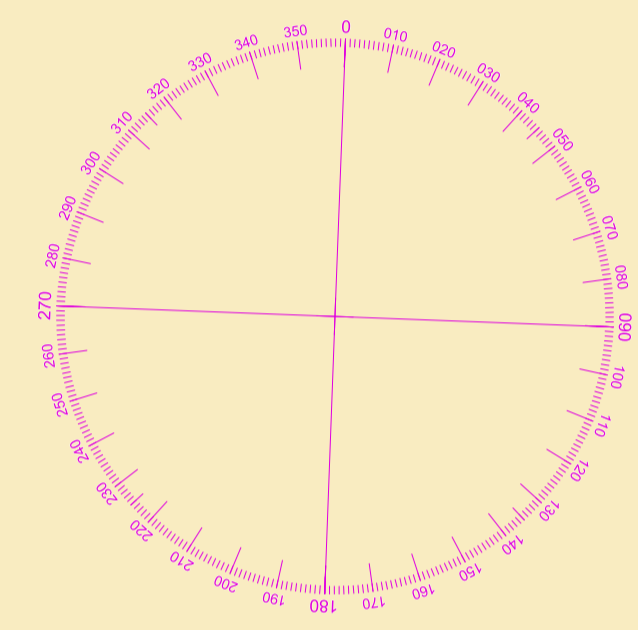
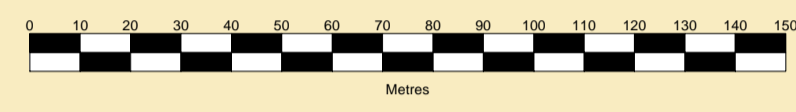




CLYDEPORT OPERATIONS LIMITED
 GARY DOYLE
 Group Harbour Master
 River Clyde
 CPR017-1-2023-002
 PILLAR BANK

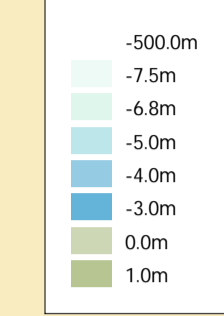
SCALE 1:1500 at A1



DEPTHS
 Depths are in metres and are reduced to chart datum being 1.68m below Ordnance Datum (Newlyn), which is approximately the level of Lowest Astronomical Tide.

HEIGHTS
 Heights are in metres. Underlined figures show heights above Chart Datum.

DEPTH COLOUR TABLE

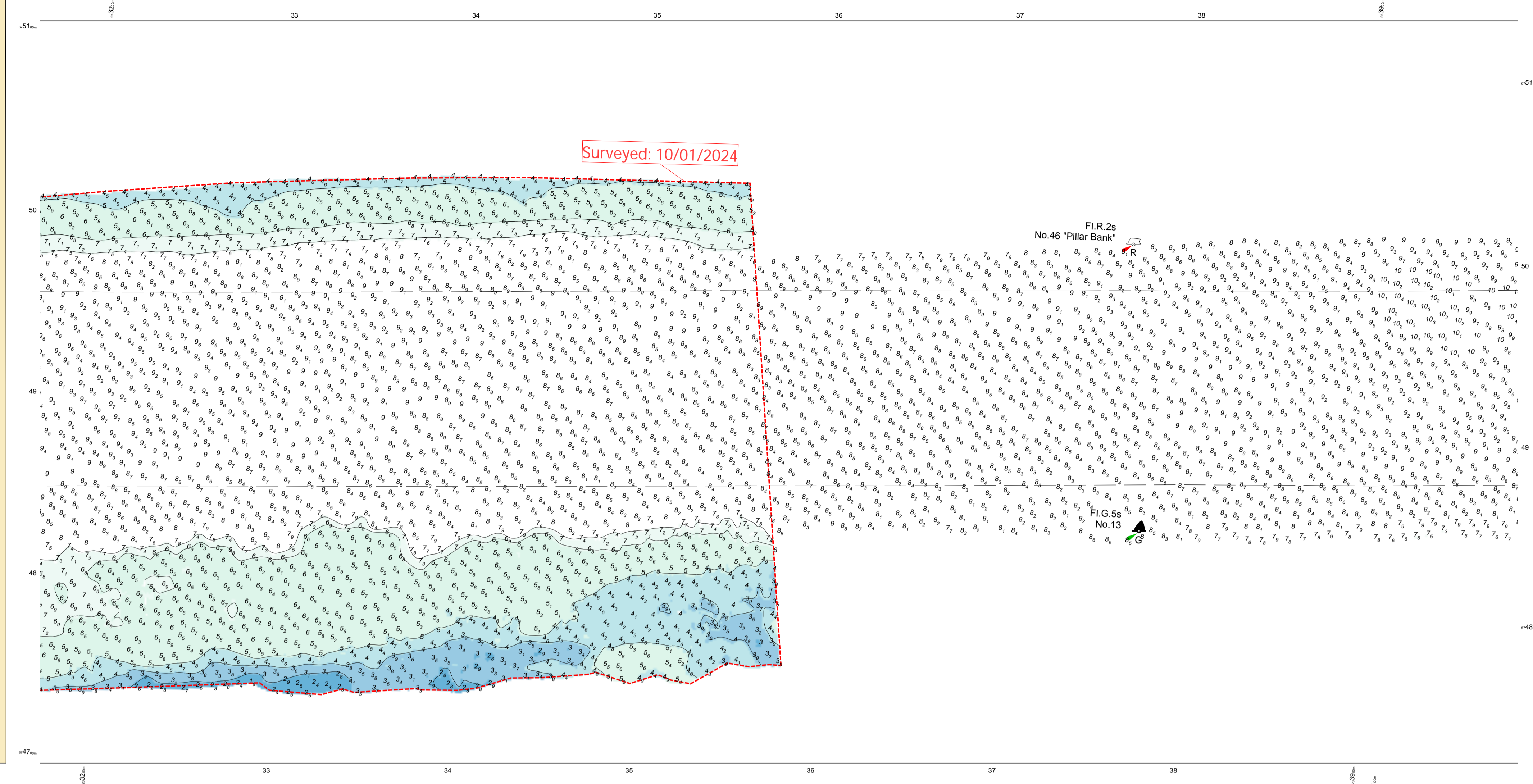


POSITIONS
 Positions are referred to OSGB36 National Grid Datum.

AUTHORISED CHANNEL
 The pecked lines indicate the limits of the authorised channel.

TOPOGRAPHY
 The shore features on this chart are based largely on Ordnance Survey digital mapping data with permission of HMSO. © Crown Copyright 2024. Peel Licence Number 100018033.

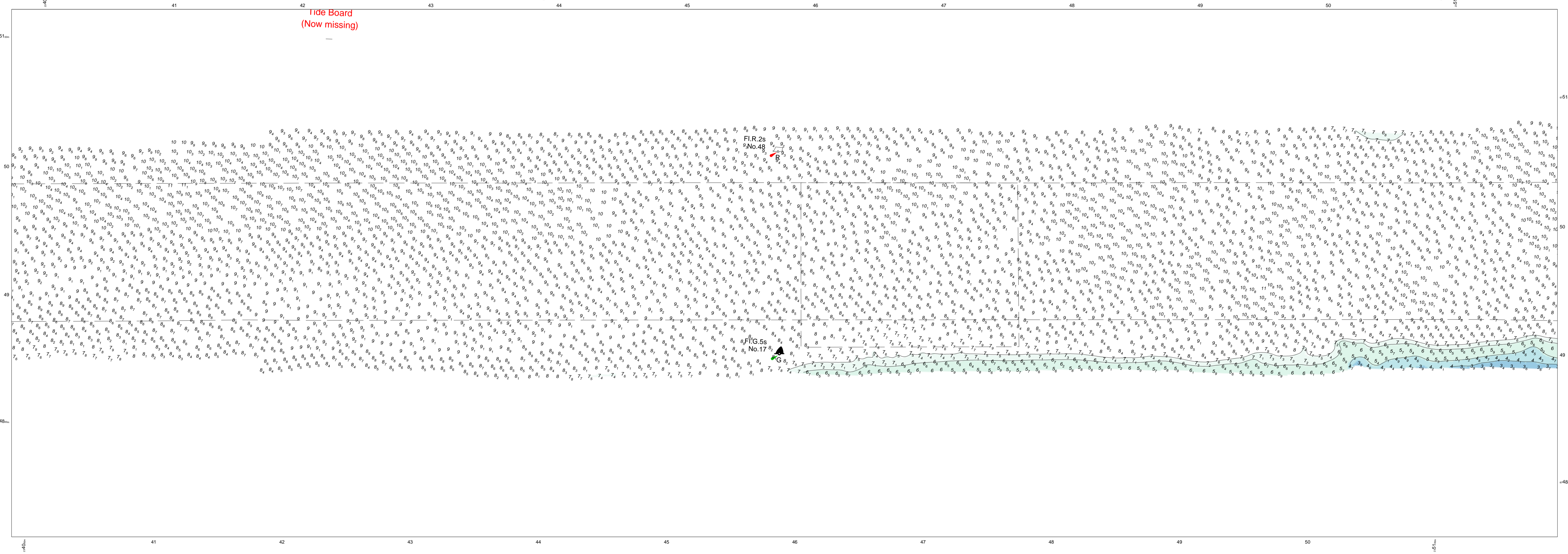
Surveyed by: VO
 Processed by: VO
 Checked by: Niall Mason
 Surveyed: 14 Sep 2023/ 10th Jan 2024
 Issued: 08 Jul 2024



Surveyed: 10/01/2024

F.I.R.2s
 No.46 "Pillar Bank"

F.I.G.5s
 No.13



Tide Board
 (Now missing)

F.I.R.2s
 No.48

F.I.G.5s
 No.17