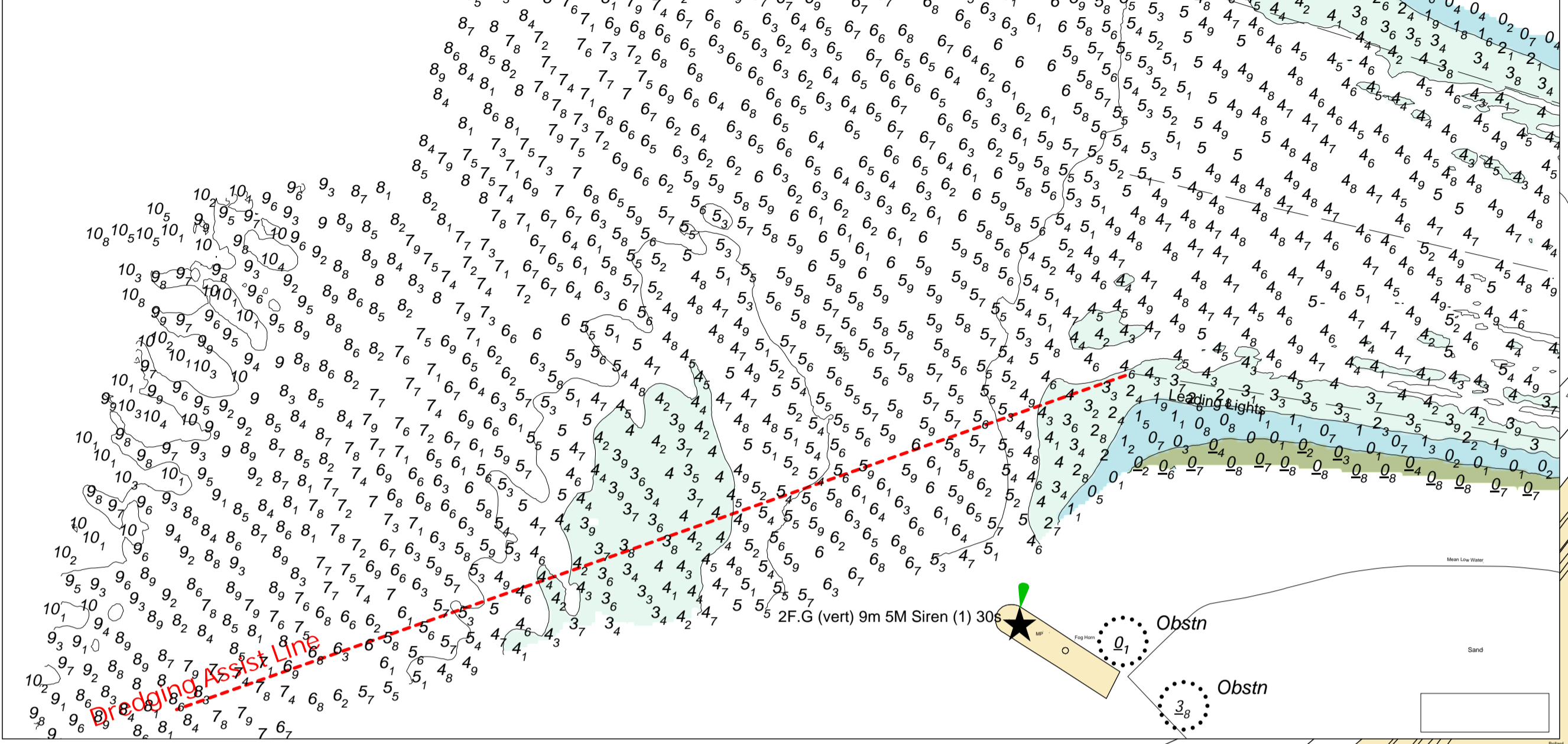
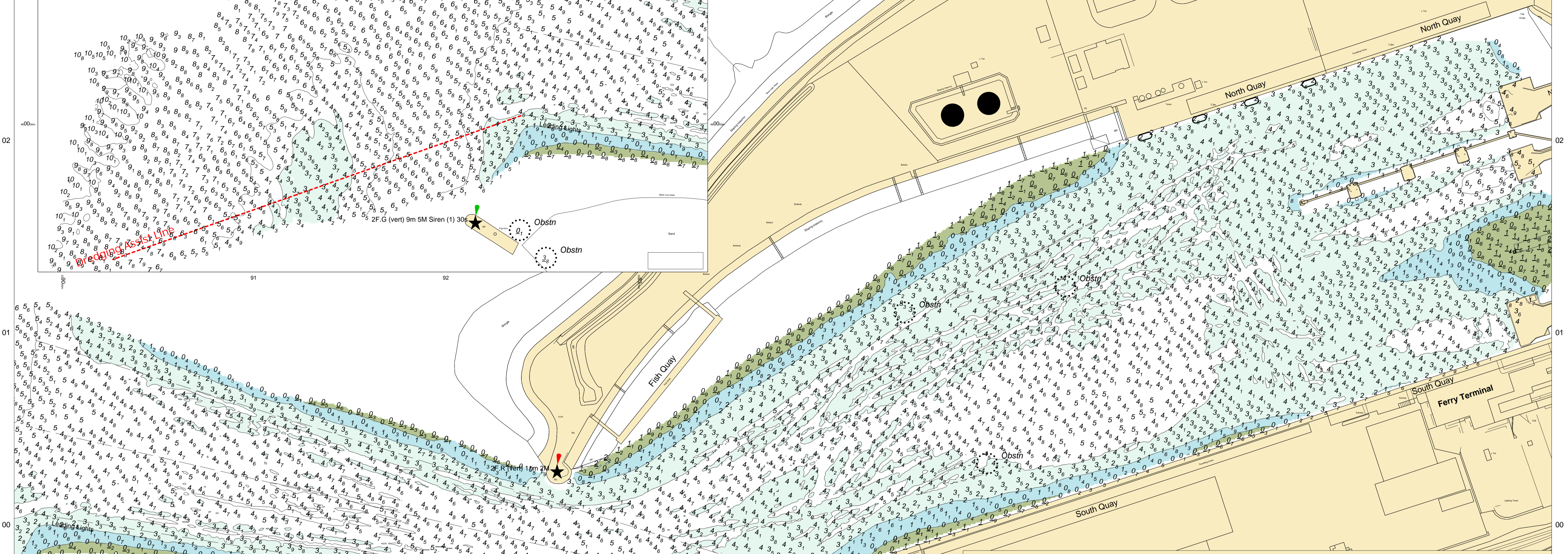


**Approaches to Harbour Entrance Insert**

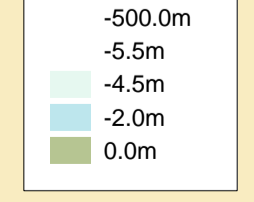


**Heysham Port**



**HEYSHAM PORT LTD**  
 Gary Doyle  
 Group Harbour Master  
**Heysham Harbour**  
**Heysham Harbour**  
**and Entrance Channel**  
**HM004\_1\_2024\_010**

**Depth (M)**



**DEPTHS**  
 Depths are in metres and are reduced to chart datum being 4.90m below Ordnance Datum (Newlyn), which is approximately the level of Lowest Astronomical Tide.

**HEIGHTS**  
 Heights are in metres. Underlined figures show heights above Chart Datum.

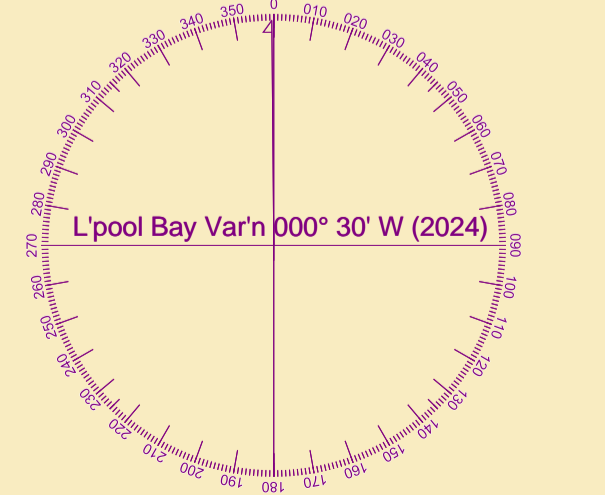
**POSITIONS**  
 Positions are referred to OSGB36 National Grid Datum.

**UKHO & NTMS**  
 When using this chart please refer to UKHO Admiralty Publications and also local Notice to Mariners and Navigational Warnings.

**FLATS & SANDBANKS**  
**CAUTION OWING TO FREQUENT CHANGES IN DEPTHS AND POSITIONS OF FLATS AND SANDBANKS THIS CHART SHOULD BE USED WITH CAUTION.**

**TOPOGRAPHY**  
 The shore features on this chart are based largely on Ordnance Survey digital mapping data with permission of HMSO. © Crown Copyright 2024. Peel Licence Number 100018033.

Surveyed by:	BWL
Processed by:	BWL
Checked by:	RCB
Surveyed:	28th May 2024
Issued:	29th May 2024
Vessel:	WD Michel



SCALE 1:1250 at A1

