



**PORT OF SHEERNESS LIMITED**

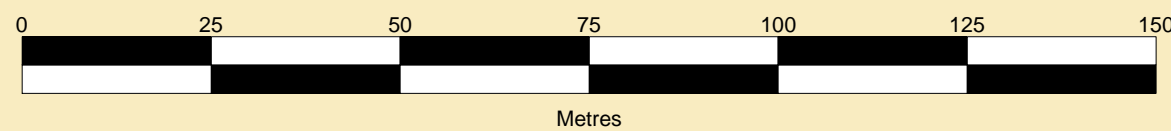
GARY DOYLE  
Group Harbour Master

River Medway

MWB002-2\_2024\_001

**ISLE OF GRAIN  
THAMESPORT  
(LONDON) LTD.**

SCALE 1:1000 at A1



**DEPTHS**  
Depths are in metres and are reduced to chart datum using 2.80m for Chatham and 2.90m for Sheerness below OD(N), with linear interpolation along channel centre line.

**HEIGHTS**  
Heights are in metres. Underlined figures show heights in meters above Chart Datum.

**DEPTH COLOUR TABLE**

Green	(-1.5m,0m)
Blue	(0m,9m)
Light Blue	(9m,11m)
White	(11m,13m)
White	(>=13m)

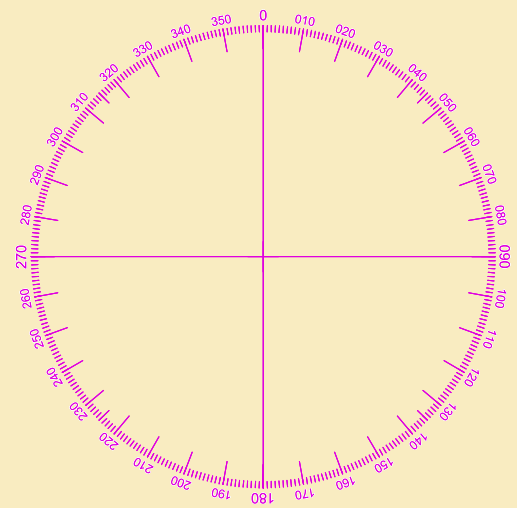
**POSITIONS**  
Positions are referred to OSGB36 National Grid Datum.

**BERTH LIMITS**  
The pecked lines indicate the berth limits of 'Thamesport'.

Surveyed by:	RSL
Processed by:	RK
Checked by:	RK
Surveyed:	25th June 2024
Issued:	8th July 2024

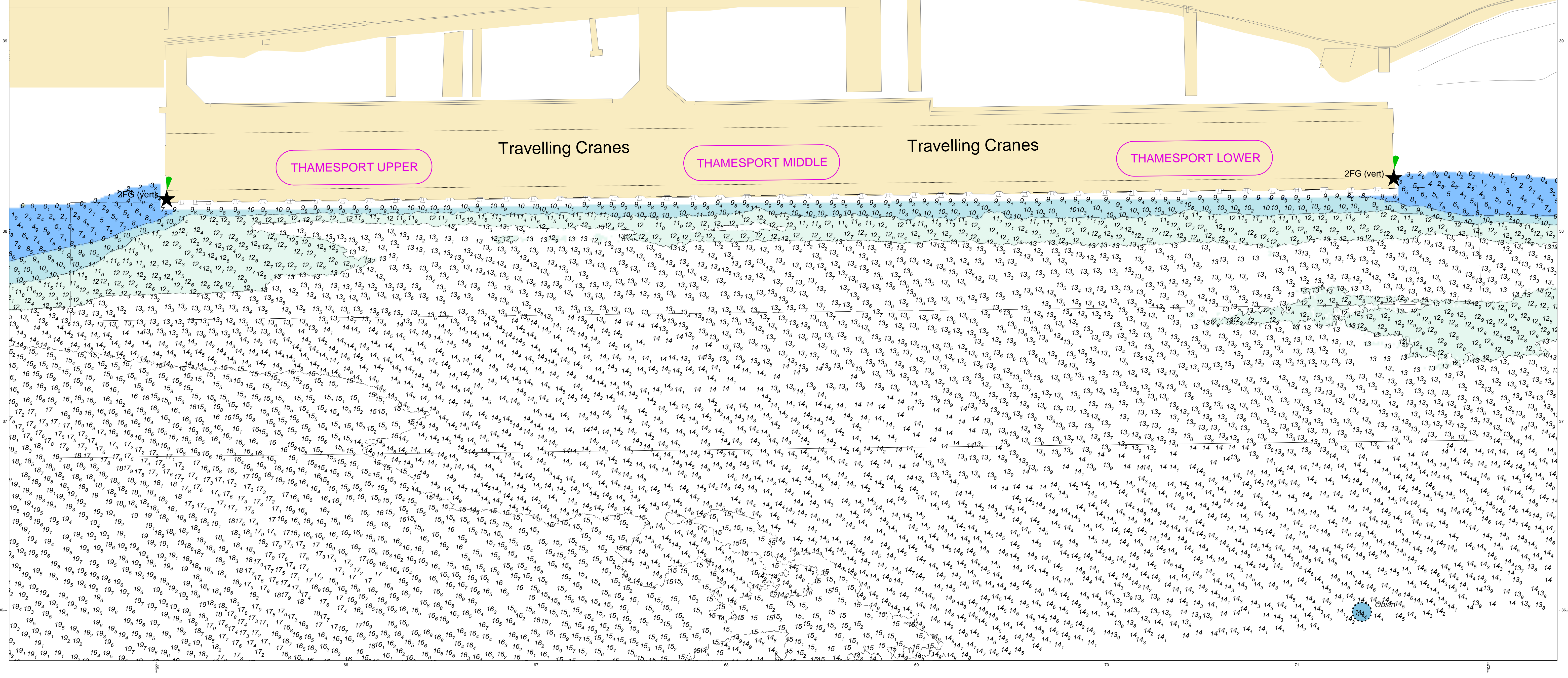
**NOTES**  
While every care has been taken in the preparation of the information relating to the soundings shown on this chart, **PEEL PORTS MEDWAY** make no warranty as to the accuracy and will not accept any responsibility whatsoever arising from errors and omissions or for any consequence arising therefrom.

**TOPOGRAPHY**  
The shore features on this chart are based largely on Ordnance Survey digital mapping data with permission of HMSO. © Crown Copyright 2024. Peel Licence Number 100018033.



**ISLE OF GRAIN**

THAMESPORT UPPER      Travelling Cranes      THAMESPORT MIDDLE      Travelling Cranes      THAMESPORT LOWER



2FG (vert)