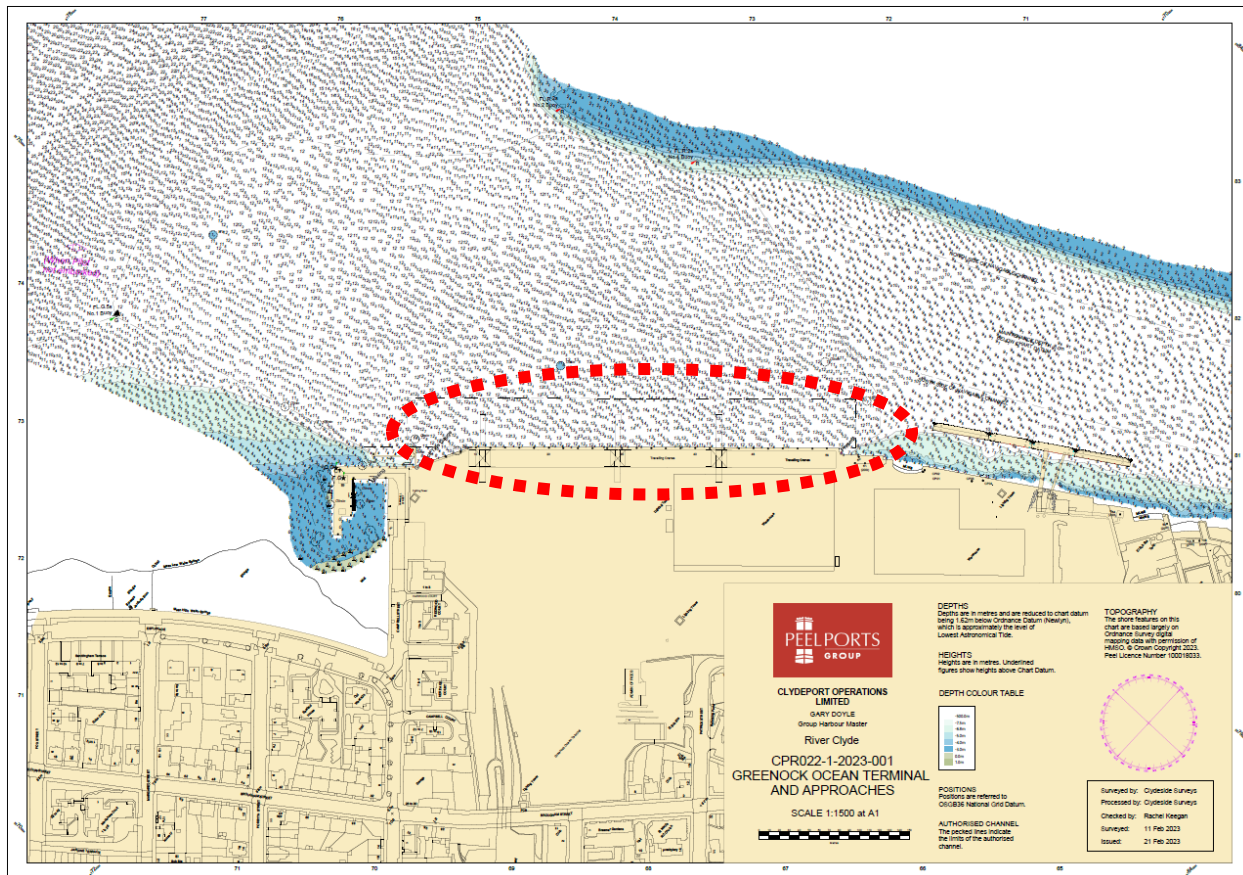
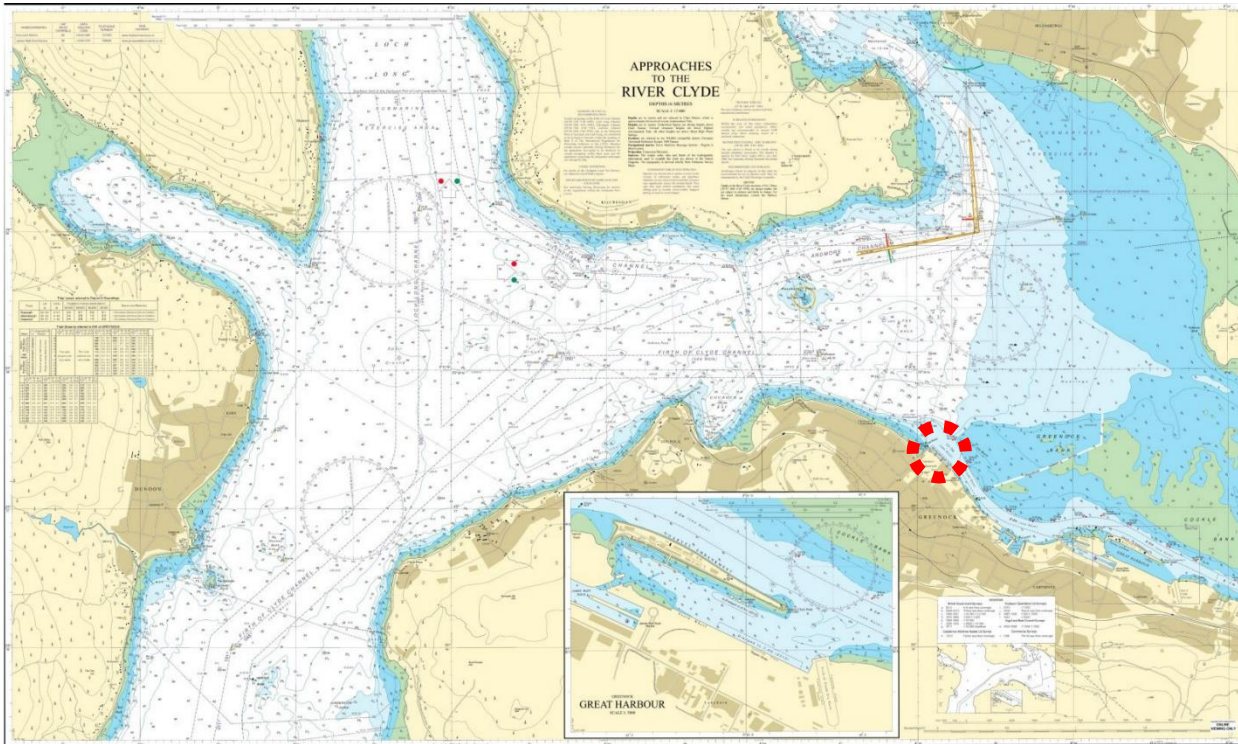


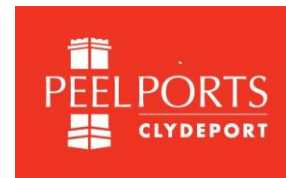
BERTH DATA SHEET

PORT OF GREENOCK



BERTH DATA SHEET

PORT OF GREENOCK



PARTICULARS/BASIC INFORMATION

Admiralty Chart No.	1994	Survey Drawing No	CPR 022-1
Min. Depth Alongside	Refer Survey Drawing	Fendering	Pencil Fenders
Quay Design	Piled and Sheet Piled	Avg Water Density	1018.2 kg/m ³
Latitude	55°57.00'N	Longitude	004°45.00'W
Quay length overall	366m	Eastings/Northings	390721, 6201897
No of berths	2 (east and west)	SWL Bollards	75T
Max vessel LOA	400m	Avg bollard spacing	15m
Max vessel beam	N/A	Line of the berth	135°/315°
Air Draught restrictions	Cranes – see comments	Quayside SWL	
ISPS Status	Compliant	Height of cope edge*	5.71m

*from Chart Datum

QUAYSIDE FACILITIES – BY PRIOR ARRANGEMENT

Fresh Water	Yes, 25 T/Hour	Shore Power	Upon request
Port Waste	Yes	Cranes	3 x container cranes

TIDAL INFORMATION – BASED ON GREENOCK

HAT	4.50m	MHWS	3.40m
MHWN	3.0m	MLWN	1.0m
MLWS	0.30m	LAT	-0.30m
Comments			

BERTH OPERATOR

NAME	Peel Ports	CONTACT DETAILS	01475 726171
------	------------	-----------------	--------------

COMMENTS:

Cranes

Height above CD 51.91m, Height above cope 46.20m, Outreach 45.60m

Refer to Clydeport Towage Matrix for tug requirements