



**MERSEY DOCKS AND HARBOUR COMPANY LTD**

Gary Doyle  
Group Harbour Master

River Mersey

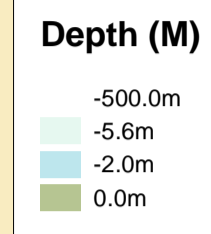
LPR001\_2\_2024\_005

**Gladstone River Entrance**

Vessel: Royal Charter  
Surveyed by: WLH  
Processed by: WLH  
Checked by: WLH  
Surveyed: 30th October 2024  
Issued: 31st October 2024  
Lock Surveyed: 30th October 2024

**DEPTHS**  
Depths are in metres and are reduced to chart datum being 4.93m below Ordnance Datum (Newlyn), which is approximately the level of Lowest Astronomical Tide.

**HEIGHTS**  
Heights are in metres. Underlined figures show heights above Chart Datum.

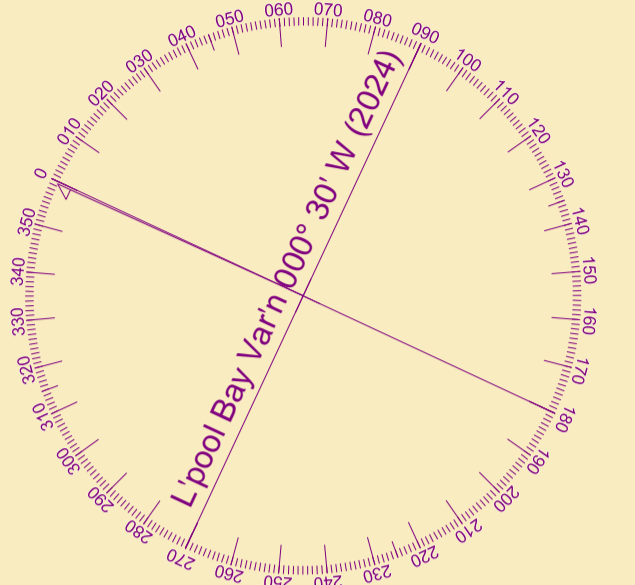


**POSITIONS**  
Positions are referred to OSGB36 National Grid Datum.

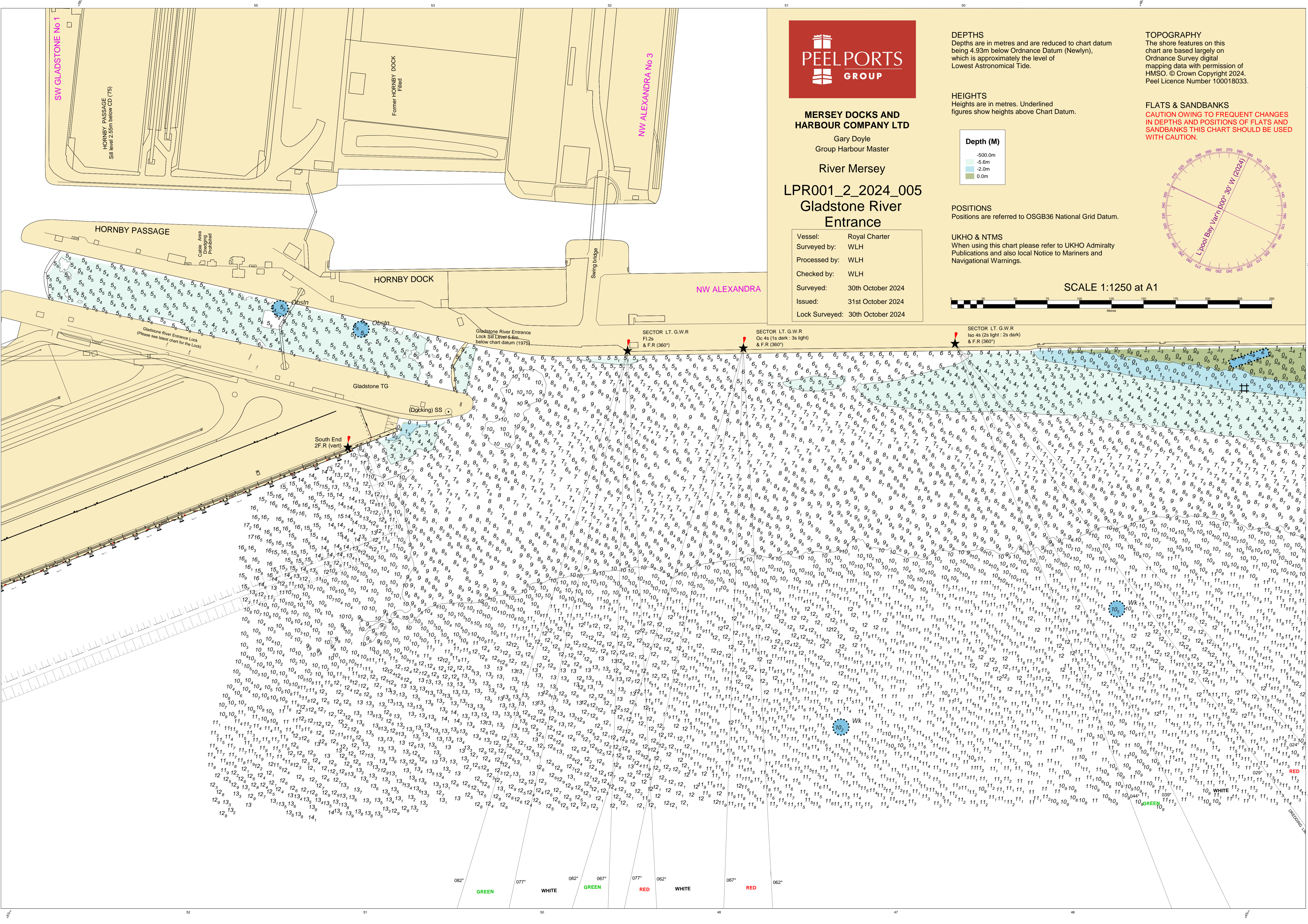
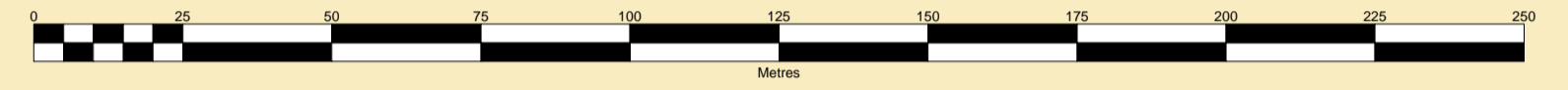
**UKHO & NTMS**  
When using this chart please refer to UKHO Admiralty Publications and also local Notice to Mariners and Navigational Warnings.

**TOPOGRAPHY**  
The shore features on this chart are based largely on Ordnance Survey digital mapping data with permission of HMSO. © Crown Copyright 2024. Peel Licence Number 100018033.

**FLATS & SANDBANKS**  
**CAUTION OWING TO FREQUENT CHANGES IN DEPTHS AND POSITIONS OF FLATS AND SANDBANKS THIS CHART SHOULD BE USED WITH CAUTION.**



SCALE 1:1250 at A1



082° GREEN 077° WHITE 082° GREEN 067° RED 062° WHITE 067° RED 062°