



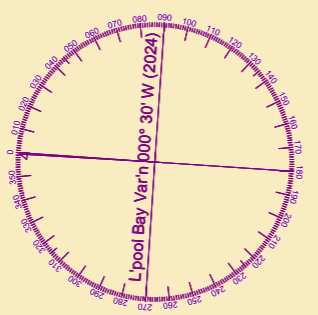
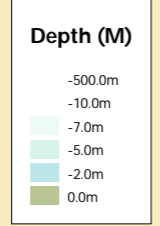
**MERSEY DOCKS AD  
HARBOUR COMPANY LTD**  
GARY DOYLE  
Group Harbour Master  
River Mersey  
LPR001\_18\_2024\_013  
Isle of Man  
Ferry Terminal  
SCALE 1:1500 at A3

**DEPTHS**  
Depths are in metres and are reduced to chart datum being 4.93m below OD(N), which is approximately the level of the Lowest Astronomical Tide.

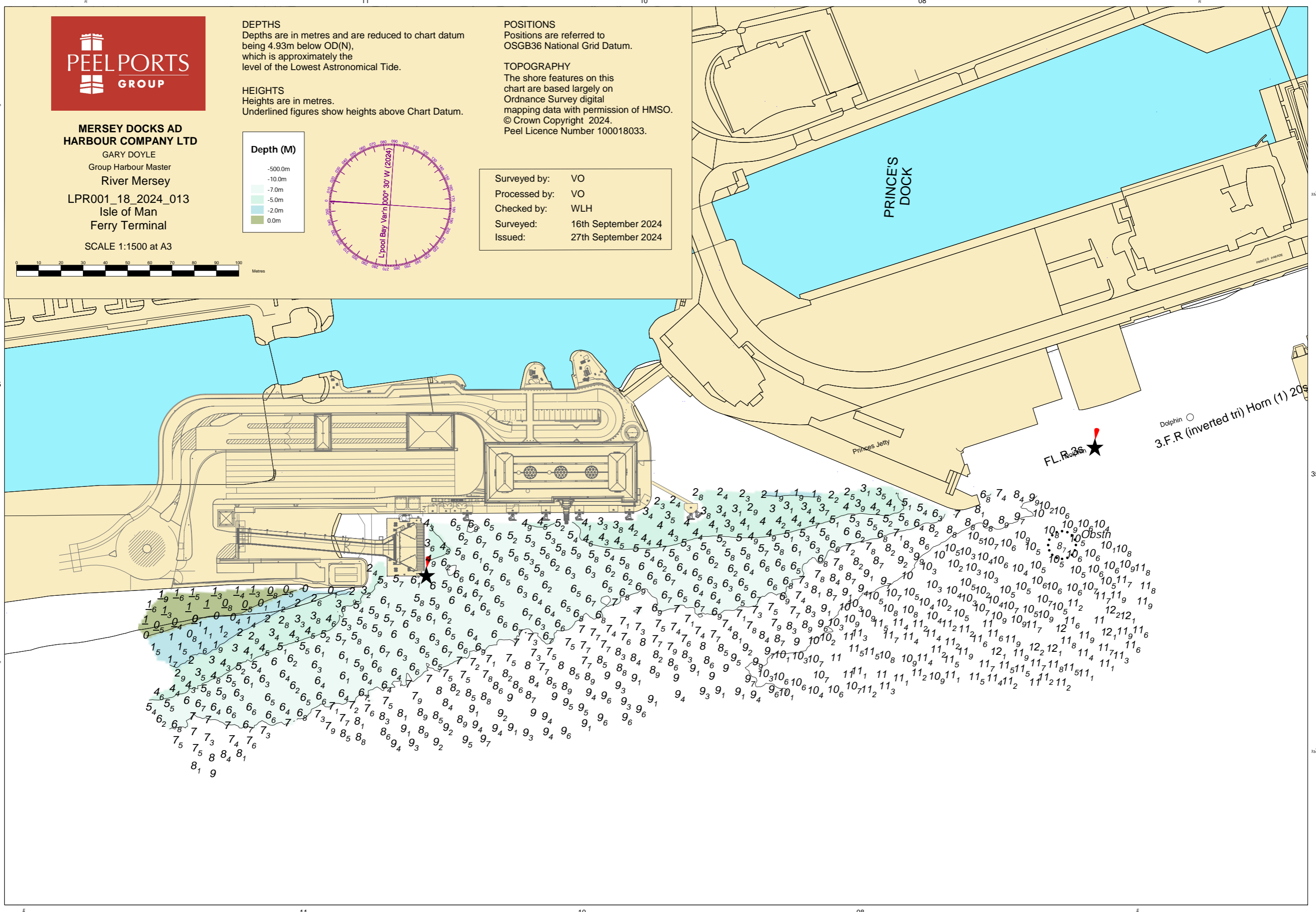
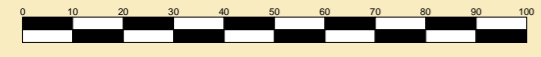
**HEIGHTS**  
Heights are in metres. Underlined figures show heights above Chart Datum.

**POSITIONS**  
Positions are referred to OSGB36 National Grid Datum.

**TOPOGRAPHY**  
The shore features on this chart are based largely on Ordnance Survey digital mapping data with permission of HMSO. © Crown Copyright 2024. Peel Licence Number 100018033.



Surveyed by: VO  
Processed by: VO  
Checked by: WLH  
Surveyed: 16th September 2024  
Issued: 27th September 2024



Dolphin ○  
3.F.R (inverted tri) Horn (1) 20s

FL. R. 3s

PRINCES DOCK

Princes Jetty

Obsth