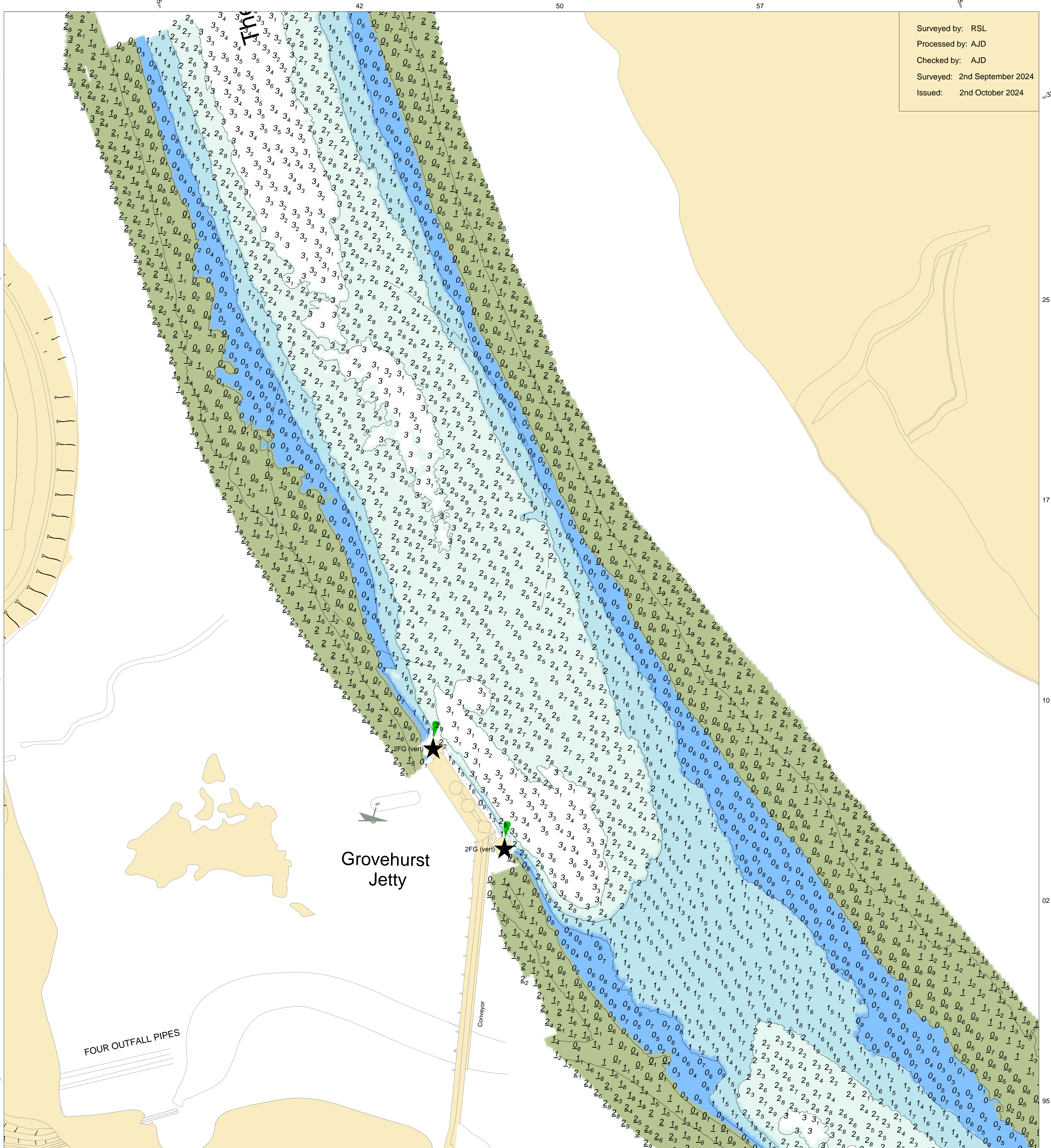


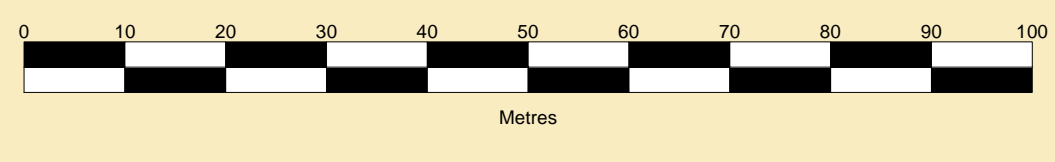
Surveyed by: RSL
 Processed by: AJD
 Checked by: AJD
 Surveyed: 2nd September 2024
 Issued: 2nd October 2024



PORT OF SHEERNESS LIMITED
 Gary Doyle
 Group Harbour Master
 The Swale

**MWB019-1_2024_001
 CLAY REACH
 GROVEHURST JETTY
 AND TURNING CIRCLE**

SCALE 1:750 at A1



DEPTHS
 Depths are in metres and are reduced to chart datum being 2.90m below Ordnance Datum (Newlyn), which is approximately the level of Lowest Astronomical Tide.

HEIGHTS
 Heights are in metres. Underlined figures show heights above Chart Datum.

DEPTH COLOUR TABLE

Light Blue	(-1.4m,0m)
Blue	(0m,1m)
Light Green	(1m,2m)
Green	(2m,4m)
Dark Green	(>=4m)

POSITIONS
 Positions are referred to OSGB36 National Grid Datum.

TURNING CIRCLE
 The pecked lines indicate the 'Grovehurst Jetty' turning circle area.

TOPOGRAPHY
 The shore features on this chart are based largely on Ordnance Survey digital mapping data with permission of HMSO. © Crown Copyright 2024. Peel Licence Number 100018033.

NOTES
 While every care has been taken in the preparation of the information relating to the soundings shown on this chart, **PEEL PORTS MEDWAY make no warranty as to the accuracy and will not accept any responsibility whatsoever arising from errors and omissions or for any consequence arising therefrom.**

