



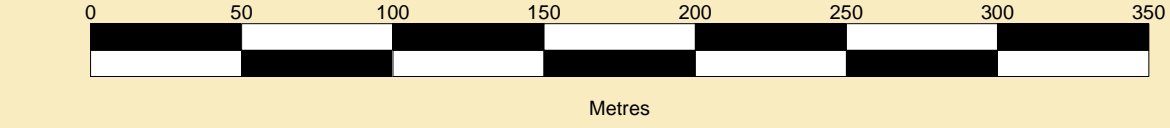
PORT OF SHEERNESS LIMITED

Gary Doyle
Group Harbour Master

Thames Estuary

MWA001-2_2025_001
MEDWAY APPROACH CHANNEL

SCALE 1:2500 at A0



DEPTHS
Depths are in metres and are reduced to chart datum using 2.80m for Chatham and 2.90m for Sheerness below OD(N), with linear interpolation along channel centre line.

HEIGHTS
Heights are in metres. Underlined figures show heights in metres above Chart Datum.

DEPTH COLOUR TABLE

(-1.5m,0m)
(0m,5m)
(5m,10.5m)
(10.5m,12.5m)
(=12.5m)

POSITIONS
Positions are referred to OSGB36 National Grid Datum

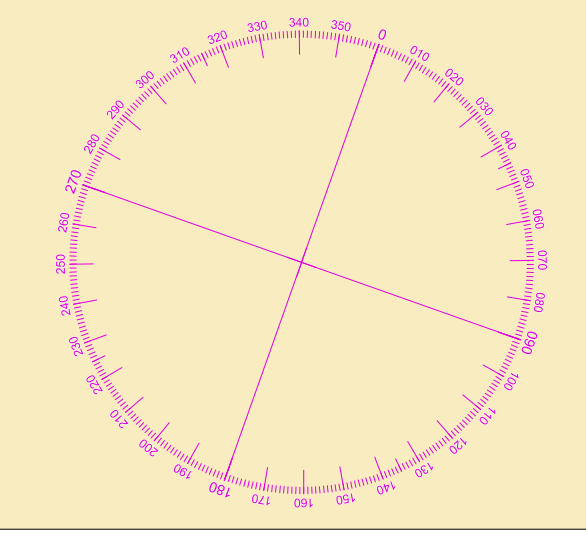
AUTHORISED CHANNEL / ANCHORAGES
The black pecked lines indicate the limits of the authorised channel and the pink pecked lines indicate the Great Nore & MAC anchorages / SS.Richard Montgomery exclusion zone.

REPORTING POINT
The Outbound London VTS Reporting Point is shown by-

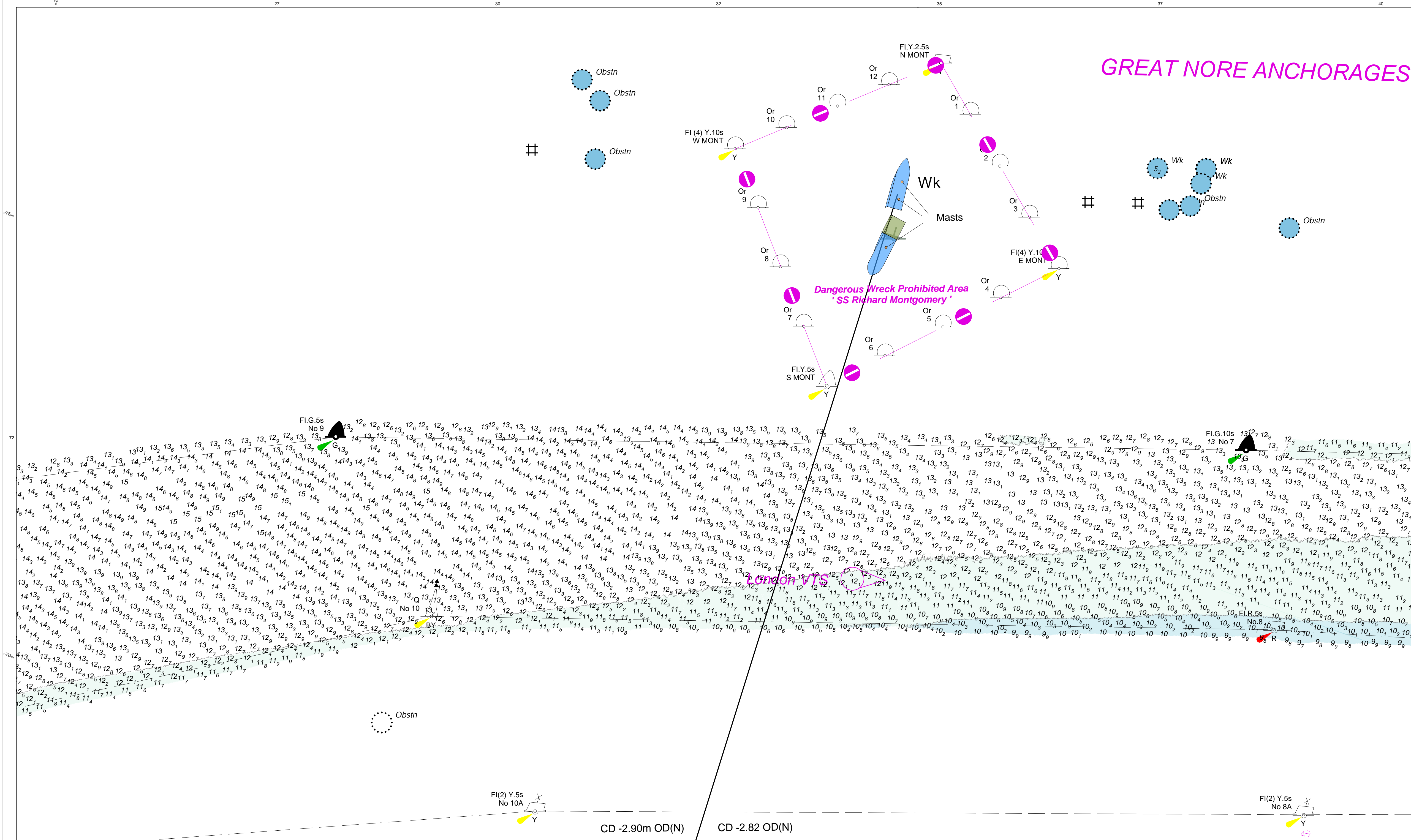
NOTES
While every care has been taken in the preparation of the information relating to the soundings shown on this chart, PEEL PORTS MEDWAY make no warranty as to the accuracy and will not accept any responsibility whatsoever arising from errors and omissions or for any consequence arising therefrom.

TOPOGRAPHY
The shore features on this chart are based largely on Ordnance Survey digital mapping data with permission of HMSO. © Crown Copyright 2025. Peel Licence Number 100018033.

Surveyed by: Randall Surveys
Processed by: Randall Surveys/RK
Checked by: RK
Surveyed: 19th-20th February 2025
Issued: 4th March 2025



GREAT NORE ANCHORAGES



GREAT NORE ANCHORAGES

