



MERSEY DOCKS AND HARBOUR COMPANY LTD

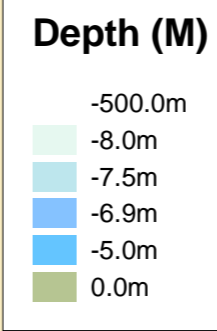
Gary Doyle
Group Harbour Master

Liverpool Channel

LPC004_5_2024_005 Crosby Channel North

DEPTHS
Depths are in metres and are reduced to chart datum being 4.93m below Ordnance Datum (Newlyn), which is approximately the level of Lowest Astronomical Tide.

HEIGHTS
Heights are in metres. Underlined figures show heights above Chart Datum.



Dredge Line

POSITIONS
Positions are referred to OSGB36 National Grid Datum.

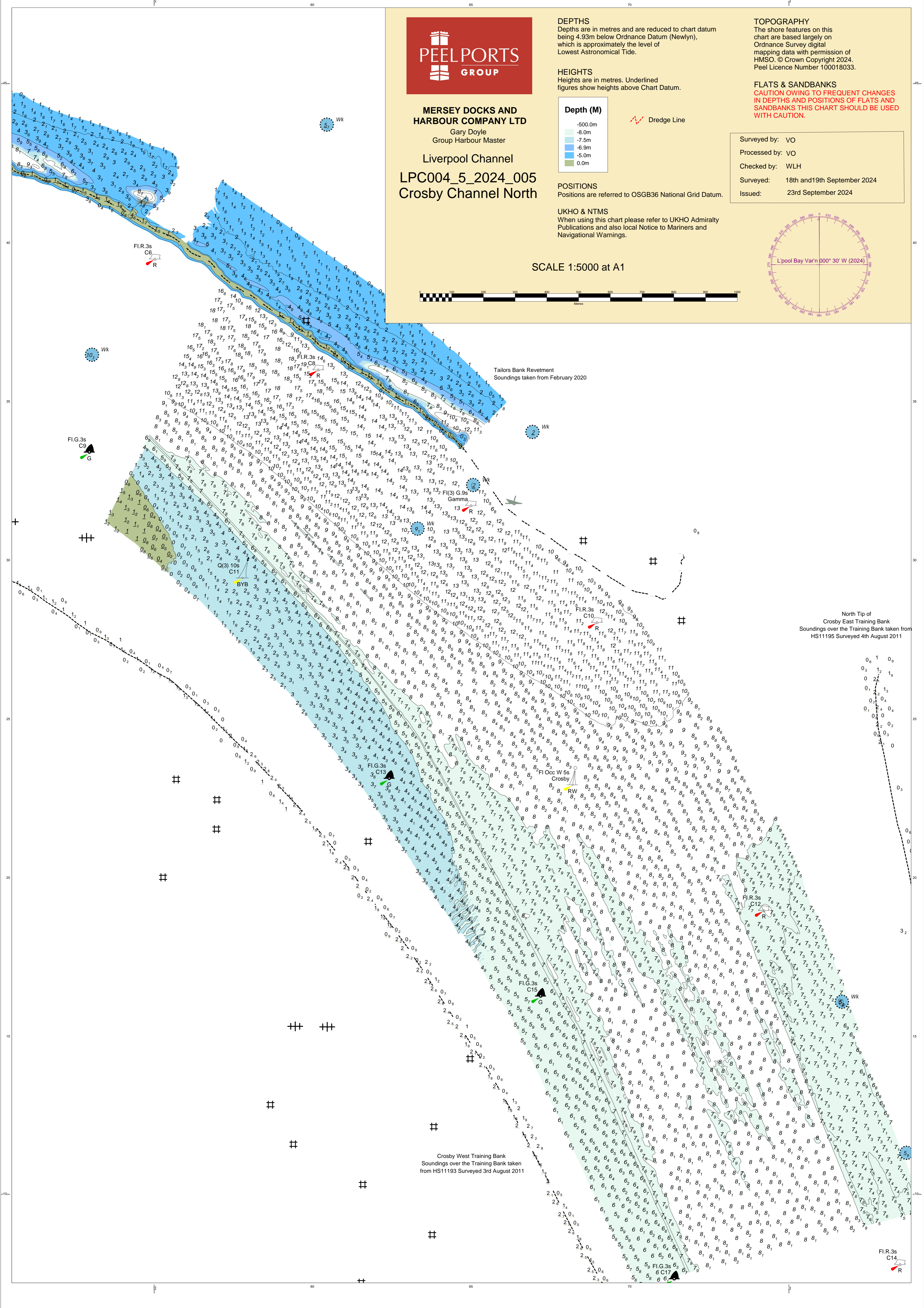
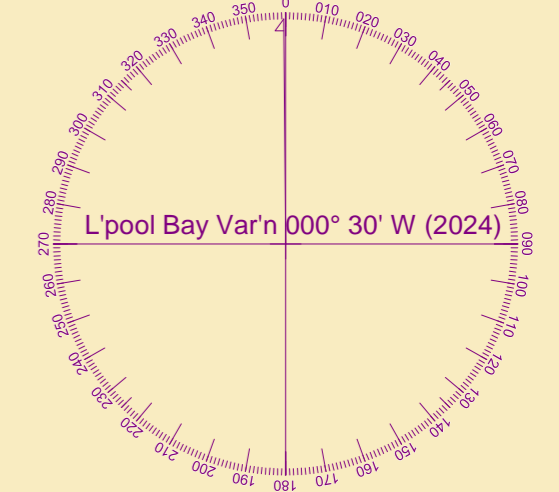
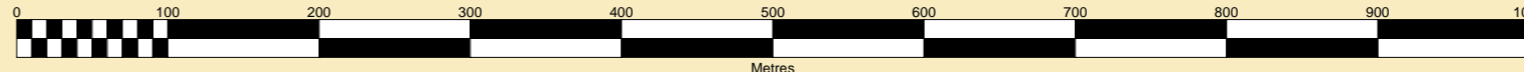
UKHO & NTMS
When using this chart please refer to UKHO Admiralty Publications and also local Notice to Mariners and Navigational Warnings.

TOPOGRAPHY
The shore features on this chart are based largely on Ordnance Survey digital mapping data with permission of HMSO. © Crown Copyright 2024. Peel Licence Number 100018033.

FLATS & SANDBANKS
CAUTION OWING TO FREQUENT CHANGES IN DEPTHS AND POSITIONS OF FLATS AND SANDBANKS THIS CHART SHOULD BE USED WITH CAUTION.

Surveyed by: VO
Processed by: VO
Checked by: WLH
Surveyed: 18th and 19th September 2024
Issued: 23rd September 2024

SCALE 1:5000 at A1



Tailors Bank Revetment
Soundings taken from February 2020

North Tip of
Crosby East Training Bank
Soundings over the Training Bank taken from
HS11195 Surveyed 4th August 2011

Crosby West Training Bank
Soundings over the Training Bank taken
from HS11193 Surveyed 3rd August 2011

FLI.R.3s
C14
6 C11
R